

PATL2 Antibody (Center)

Affinity Purified Rabbit Polyclonal Antibody (Pab)

Catalog # AP11391c

Product Information

Application	WB, IHC-P, IF, E
Primary Accession	C9JE40
Other Accession	NP_001138584.1
Reactivity	Human
Host	Rabbit
Clonality	Polyclonal
Isotype	Rabbit IgG
Clone Names	RB29364
Calculated MW	61464
Antigen Region	168-196

Additional Information

Gene ID	197135
Other Names	Protein PAT1 homolog 2, PAT1-like protein 2, Protein PAT1 homolog a, Pat1a, hPat1a, PATL2
Target/Specificity	This PATL2 antibody is generated from rabbits immunized with a KLH conjugated synthetic peptide between 168-196 amino acids from the Central region of human PATL2.
Dilution	WB~~1:2000 IHC-P~~1:100~500 IF~~1:10~50 E~~Use at an assay dependent concentration.
Format	Purified polyclonal antibody supplied in PBS with 0.05% (V/V) Proclin 300. This antibody is purified through a protein A column, followed by peptide affinity purification.
Storage	Maintain refrigerated at 2-8°C for up to 2 weeks. For long term storage store at -20°C in small aliquots to prevent freeze-thaw cycles.
Precautions	PATL2 Antibody (Center) is for research use only and not for use in diagnostic or therapeutic procedures.

Protein Information

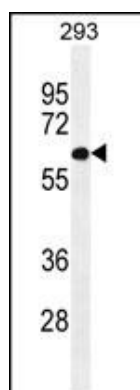
Name	PATL2
Function	RNA-binding protein that acts as a translational repressor.

Cellular Location	Cytoplasm. Nucleus {ECO:0000250 UniProtKB:A2ARM1}
Tissue Location	Highly expressed in oocytes.

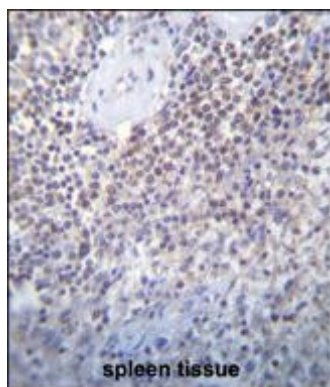
References

Scheller, N., et al. Biochim. Biophys. Acta 1773(12):1786-1792(2007)

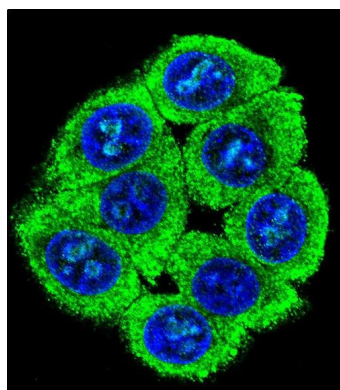
Images



PATL2 Antibody (Center) (Cat. #AP11391c) western blot analysis in 293 cell line lysates (35ug/lane). This demonstrates the PATL2 antibody detected the PATL2 protein (arrow).



PATL2 Antibody (Center) (Cat. #AP11391c) immunohistochemistry analysis in formalin fixed and paraffin embedded human spleen tissue followed by peroxidase conjugation of the secondary antibody and DAB staining. This data demonstrates the use of PATL2 Antibody (Center) for immunohistochemistry. Clinical relevance has not been evaluated.



Confocal immunofluorescent analysis of PATL2 Antibody (Center) (Cat#AP11391c) with 293 cell followed by Alexa Fluor 488-conjugated goat anti-rabbit IgG (green). DAPI was used to stain the cell nuclear (blue).

Please note: All products are 'FOR RESEARCH USE ONLY. NOT FOR USE IN DIAGNOSTIC OR THERAPEUTIC PROCEDURES'.