

FNDC8 Antibody (Center)

Affinity Purified Rabbit Polyclonal Antibody (Pab)

Catalog # AP11395c

Product Information

Application	WB, E
Primary Accession	Q8TC99
Other Accession	NP_060029.1
Reactivity	Human
Host	Rabbit
Clonality	Polyclonal
Isotype	Rabbit IgG
Clone Names	RB29383
Calculated MW	35921
Antigen Region	204-232

Additional Information

Gene ID	54752
Other Names	Fibronectin type III domain-containing protein 8, FNDC8
Target/Specificity	This FNDC8 antibody is generated from rabbits immunized with a KLH conjugated synthetic peptide between 204-232 amino acids from the Central region of human FNDC8.
Dilution	WB~~1:1000 E~~Use at an assay dependent concentration.
Format	Purified polyclonal antibody supplied in PBS with 0.09% (W/V) sodium azide. This antibody is purified through a protein A column, followed by peptide affinity purification.
Storage	Maintain refrigerated at 2-8°C for up to 2 weeks. For long term storage store at -20°C in small aliquots to prevent freeze-thaw cycles.
Precautions	FNDC8 Antibody (Center) is for research use only and not for use in diagnostic or therapeutic procedures.

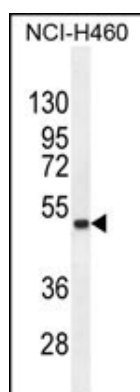
Protein Information

Name	FNDC8
------	-------

References

Suzuki, Y., et al. Gene 200 (1-2), 149-156 (1997) :

Images



FND8 Antibody (Center) (Cat. #AP11395c) western blot analysis in NCI-H460 cell line lysates (35ug/lane). This demonstrates the FND8 antibody detected the FND8 protein (arrow).

Please note: All products are 'FOR RESEARCH USE ONLY. NOT FOR USE IN DIAGNOSTIC OR THERAPEUTIC PROCEDURES'.