

RLBP1L2 Antibody (C-term)

Affinity Purified Rabbit Polyclonal Antibody (Pab)

Catalog # AP11406b

Product Information

Application	WB, IHC-P, E
Primary Accession	Q5SYC1
Other Accession	A6JUQ6 , Q8BG92 , Q95KF7 , NP_001010852.2
Reactivity	Mouse
Predicted	Monkey, Rat
Host	Rabbit
Clonality	Polyclonal
Isotype	Rabbit IgG
Clone Names	RB29409
Calculated MW	38000
Antigen Region	251-279

Additional Information

Gene ID	134829
Other Names	Clavesin-2, Retinaldehyde-binding protein 1-like 2, CLVS2, C6orf212, C6orf213, RLBP1L2
Target/Specificity	This RLBP1L2 antibody is generated from rabbits immunized with a KLH conjugated synthetic peptide between 251-279 amino acids from the C-terminal region of human RLBP1L2.
Dilution	WB~~1:1000 IHC-P~~1:100~500 E~~Use at an assay dependent concentration.
Format	Purified polyclonal antibody supplied in PBS with 0.05% (V/V) Proclin 300. This antibody is prepared by Saturated Ammonium Sulfate (SAS) precipitation followed by dialysis against PBS.
Storage	Maintain refrigerated at 2-8°C for up to 2 weeks. For long term storage store at -20°C in small aliquots to prevent freeze-thaw cycles.
Precautions	RLBP1L2 Antibody (C-term) is for research use only and not for use in diagnostic or therapeutic procedures.

Protein Information

Name	CLVS2
Synonyms	C6orf212, C6orf213, RLBP1L2

Function	Required for normal morphology of late endosomes and/or lysosomes in neurons (By similarity). Binds phosphatidylinositol 3,5- bisphosphate (PtdIns(3,5)P2).
Cellular Location	Golgi apparatus, trans-Golgi network membrane; Peripheral membrane protein. Cytoplasmic vesicle, clathrin-coated vesicle. Early endosome membrane; Peripheral membrane protein

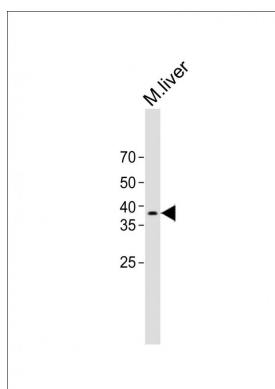
Background

Required for normal morphology of late endosomes and/or lysosomes in neurons (By similarity). Binds phosphatidylinositol 3,5-bisphosphate (PtdIns(3,5)P2).

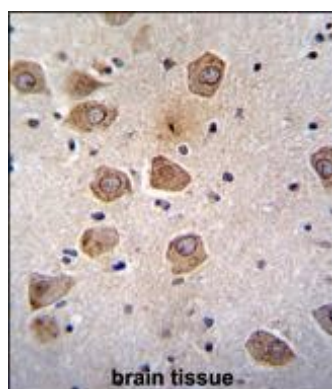
References

Katoh, Y., et al. J. Biol. Chem. 284(40):27646-27654(2009)

Images



All lanes: Anti-RLBP1L2 Antibody (C-term) at 1:1000 dilution + Mouse liver lysate Lysates/proteins at 20 µg per lane. Secondary: Goat Anti-Rabbit IgG, (H+L), Peroxidase conjugated (ASP1615) at 1/15000 dilution. Observed band size: 38 KDa Blocking/Dilution buffer: 5% NFDM/TBST.



RLBP1L2 Antibody (C-term) (Cat. #AP11406b) immunohistochemistry analysis in formalin fixed and paraffin embedded human brain tissue followed by peroxidase conjugation of the secondary antibody and DAB staining. This data demonstrates the use of RLBP1L2 Antibody (C-term) for immunohistochemistry. Clinical relevance has not been evaluated.

Please note: All products are 'FOR RESEARCH USE ONLY. NOT FOR USE IN DIAGNOSTIC OR THERAPEUTIC PROCEDURES'.