

# PRAMEF6 Antibody (C-term)

Affinity Purified Rabbit Polyclonal Antibody (Pab)

Catalog # AP11418b

## Product Information

---

Application	WB, IHC-P, IF, FC, E
Primary Accession	<a href="#">Q5VXH4</a>
Other Accession	<a href="#">Q5TYX0</a> , <a href="#">A6NMV5</a> , <a href="#">NP_001010889.1</a>
Reactivity	Human
Host	Rabbit
Clonality	Polyclonal
Isotype	Rabbit IgG
Clone Names	RB29486
Calculated MW	54852
Antigen Region	395-423

## Additional Information

---

Gene ID	440561
Other Names	PRAME family member 6, PRAMEF6
Target/Specificity	This PRAMEF6 antibody is generated from rabbits immunized with a KLH conjugated synthetic peptide between 395-423 amino acids from the C-terminal region of human PRAMEF6.
Dilution	WB~~1:1000 IHC-P~~1:100~500 IF~~1:10~50 FC~~1:10~50 E~~Use at an assay dependent concentration.
Format	Purified polyclonal antibody supplied in PBS with 0.05% (V/V) Proclin 300. This antibody is purified through a protein A column, followed by peptide affinity purification.
Storage	Maintain refrigerated at 2-8°C for up to 2 weeks. For long term storage store at -20°C in small aliquots to prevent freeze-thaw cycles.
Precautions	PRAMEF6 Antibody (C-term) is for research use only and not for use in diagnostic or therapeutic procedures.

## Protein Information

---

Name	PRAMEF6 {ECO:0000303 PubMed:26138980, ECO:0000312 HGNC:HGNC:30583}
Function	Substrate-recognition component of a Cul2-RING (CRL2) E3 ubiquitin-protein ligase complex, which mediates ubiquitination of target

proteins, leading to their degradation (PubMed:[26138980](#)). The CRL2(PRAMEF6) complex mediates ubiquitination and degradation of truncated MSRB1/SEPX1 selenoproteins produced by failed UGA/Sec decoding (PubMed:[26138980](#)).

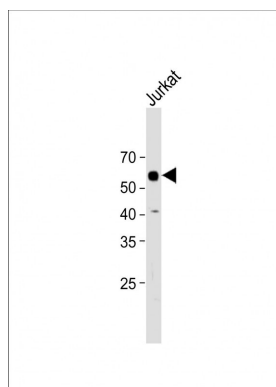
## References

---

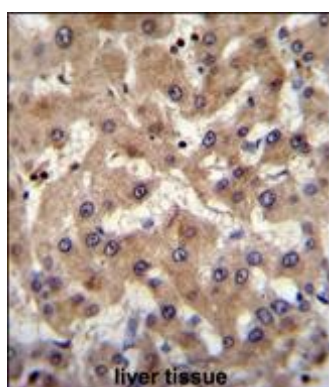
Gregory, S.G., et al. Nature 441(7091):315-321(2006)

## Images

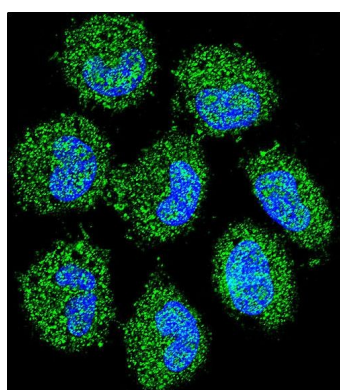
---



All lanes: Anti-PRAMEF6 Antibody (C-term) at 1:2000 dilution + Jurkat whole cell lysate Lysates/proteins at 20 µg per lane. Secondary: Goat Anti-Rabbit IgG, (H+L), Peroxidase conjugated (ASP1615) at 1/15000 dilution. Observed band size: 55 KDa Blocking/Dilution buffer: 5% NFDM/TBST.

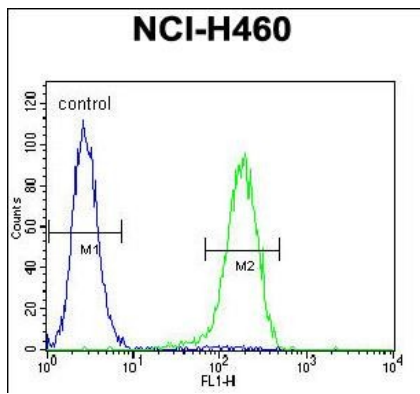


PRAMEF6 Antibody (C-term) (Cat. #AP11418b) immunohistochemistry analysis in formalin fixed and paraffin embedded human liver tissue followed by peroxidase conjugation of the secondary antibody and DAB staining. This data demonstrates the use of PRAMEF6 Antibody (C-term) for immunohistochemistry. Clinical relevance has not been evaluated.



Confocal immunofluorescent analysis of PRAMEF6 Antibody (C-term) (Cat. #AP11418b) with NCI-H460 cell followed by Alexa Fluor 488-conjugated goat anti-rabbit IgG (green). DAPI was used to stain the cell nuclear (blue).

PRAMEF6 Antibody (C-term) (Cat. #AP11418b) flow cytometric analysis of NCI-H460 cells (right histogram) compared to a negative control cell (left histogram). FITC-conjugated goat-anti-rabbit secondary antibodies were used for the analysis.



Please note: All products are 'FOR RESEARCH USE ONLY. NOT FOR USE IN DIAGNOSTIC OR THERAPEUTIC PROCEDURES'.