

ZNF829 Antibody (Center)

Affinity Purified Rabbit Polyclonal Antibody (Pab)

Catalog # AP11427c

Product Information

Application	WB, FC, E
Primary Accession	Q3KNS6
Other Accession	NP_001165450.1 , NP_001032309.2
Reactivity	Human
Host	Rabbit
Clonality	Polyclonal
Isotype	Rabbit IgG
Clone Names	RB29544
Calculated MW	50142
Antigen Region	127-155

Additional Information

Gene ID	374899
Other Names	Zinc finger protein 829, ZNF829
Target/Specificity	This ZNF829 antibody is generated from rabbits immunized with a KLH conjugated synthetic peptide between 127-155 amino acids from the Central region of human ZNF829.
Dilution	WB~~1:1000 FC~~1:10~50 E~~Use at an assay dependent concentration.
Format	Purified polyclonal antibody supplied in PBS with 0.09% (W/V) sodium azide. This antibody is purified through a protein A column, followed by peptide affinity purification.
Storage	Maintain refrigerated at 2-8°C for up to 2 weeks. For long term storage store at -20°C in small aliquots to prevent freeze-thaw cycles.
Precautions	ZNF829 Antibody (Center) is for research use only and not for use in diagnostic or therapeutic procedures.

Protein Information

Name	ZNF829
Function	May be involved in transcriptional regulation.
Cellular Location	Nucleus.

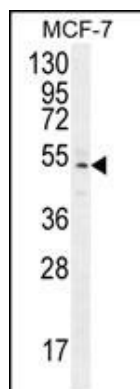
Background

May be involved in transcriptional regulation.

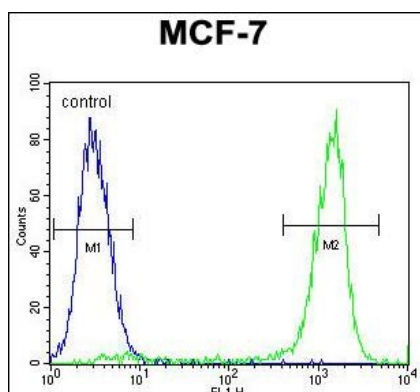
References

Strausberg, R.L., et al. Proc. Natl. Acad. Sci. U.S.A. 99(26):16899-16903(2002)

Images



ZNF829 Antibody (Center) (Cat. #AP11427c) western blot analysis in MCF-7 cell line lysates (35ug/lane). This demonstrates the ZNF829 antibody detected the ZNF829 protein (arrow).



ZNF829 Antibody (Center) (Cat. #AP11427c) flow cytometric analysis of MCF-7 cells (right histogram) compared to a negative control cell (left histogram). FITC-conjugated goat-anti-rabbit secondary antibodies were used for the analysis.

Please note: All products are 'FOR RESEARCH USE ONLY. NOT FOR USE IN DIAGNOSTIC OR THERAPEUTIC PROCEDURES'.