

# KRBA2 Antibody (Center)

Affinity Purified Rabbit Polyclonal Antibody (Pab)  
Catalog # AP11433C

## Product Information

---

<b>Application</b>	WB, IHC-P, IF, E
<b>Primary Accession</b>	<a href="#">Q6ZNG9</a>
<b>Other Accession</b>	<a href="#">NP_998762.1</a>
<b>Reactivity</b>	Human
<b>Host</b>	Rabbit
<b>Clonality</b>	Polyclonal
<b>Isotype</b>	Rabbit IgG
<b>Clone Names</b>	RB29570
<b>Antigen Region</b>	157-186

## Additional Information

---

<b>Other Names</b>	KRAB-A domain-containing protein 2, KRBA2
<b>Target/Specificity</b>	This KRBA2 antibody is generated from rabbits immunized with a KLH conjugated synthetic peptide between 157-186 amino acids from the Central region of human KRBA2.
<b>Dilution</b>	WB~~1:1000 IHC-P~~1:100~500 IF~~1:10~50 E~~Use at an assay dependent concentration.
<b>Format</b>	Purified polyclonal antibody supplied in PBS with 0.09% (W/V) sodium azide. This antibody is purified through a protein A column, followed by peptide affinity purification.
<b>Storage</b>	Maintain refrigerated at 2-8°C for up to 2 weeks. For long term storage store at -20°C in small aliquots to prevent freeze-thaw cycles.
<b>Precautions</b>	KRBA2 Antibody (Center) is for research use only and not for use in diagnostic or therapeutic procedures.

## Protein Information

---

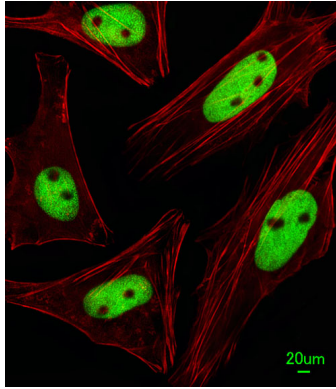
## References

---

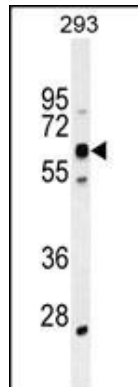
Matsuoka, S., et al. Science 316(5828):1160-1166(2007)  
Strausberg, R.L., et al. Proc. Natl. Acad. Sci. U.S.A. 99(26):16899-16903(2002)

## Images

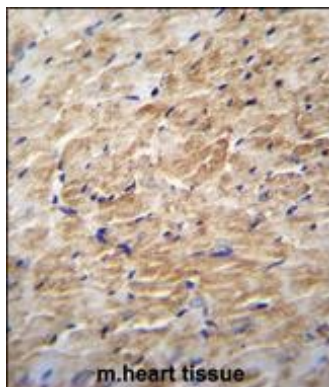
---



Immunofluorescent analysis of HeLa cells, using KRBA2 Antibody (Center) (Cat. #AP11433c). AP11433c was diluted at 1:25 dilution. Alexa Fluor 488-conjugated goat anti-rabbit IgG at 1:400 dilution was used as the secondary antibody (green). Cytoplasmic actin was counterstained with Dylight Fluor® 554 (red) conjugated Phalloidin (red).



KRBA2 Antibody (Center) (Cat. #AP11433c) western blot analysis in 293 cell line lysates (35ug/lane). This demonstrates the KCat. #A2 antibody detected the KCat. #A2 protein (arrow).



KRBA2 Antibody (Center) (Cat. #AP11433c) immunohistochemistry analysis in formalin fixed and paraffin embedded m.heart tissue followed by peroxidase conjugation of the secondary antibody and DAB staining. This data demonstrates the use of KRBA2 Antibody (Center) for immunohistochemistry. Clinical relevance has not been evaluated.

Please note: All products are 'FOR RESEARCH USE ONLY. NOT FOR USE IN DIAGNOSTIC OR THERAPEUTIC PROCEDURES'.