

# LZP Antibody

Purified Rabbit Polyclonal Antibody (Pab)

Catalog # AP11447a

## Product Information

---

<b>Application</b>	WB, E
<b>Primary Accession</b>	<a href="#">Q8WWZ8</a>
<b>Other Accession</b>	<a href="#">NP_689848.1</a>
<b>Reactivity</b>	Human, Mouse
<b>Host</b>	Rabbit
<b>Clonality</b>	Polyclonal
<b>Isotype</b>	Rabbit IgG
<b>Clone Names</b>	RB14746
<b>Calculated MW</b>	60022

## Additional Information

---

<b>Gene ID</b>	170392
<b>Other Names</b>	Oncoprotein-induced transcript 3 protein, Liver-specific zona pellucida domain-containing protein, OIT3, LZP
<b>Target/Specificity</b>	This OIT3 antibody is generated from rabbits immunized with a Gst fusion protein from human OIT3.
<b>Dilution</b>	WB~~1:1000 E~~Use at an assay dependent concentration.
<b>Format</b>	Purified polyclonal antibody supplied in PBS with 0.09% (W/V) sodium azide. This antibody is prepared by Saturated Ammonium Sulfate (SAS) precipitation followed by dialysis against PBS.
<b>Storage</b>	Maintain refrigerated at 2-8°C for up to 2 weeks. For long term storage store at -20°C in small aliquots to prevent freeze-thaw cycles.
<b>Precautions</b>	LZP Antibody is for research use only and not for use in diagnostic or therapeutic procedures.

## Protein Information

---

<b>Name</b>	OIT3
<b>Synonyms</b>	LZP
<b>Function</b>	May be involved in hepatocellular function and development.
<b>Cellular Location</b>	Nucleus envelope. Note=Can be secreted into blood

**Tissue Location**

Liver-specific. Expressed only in the hepatocytes. Down-regulated in hepatocellular carcinoma (HCC) and HCC cell lines

**Background**

May be involved in hepatocellular function and development.

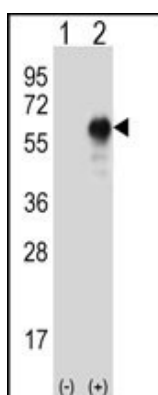
**References**

Shen, H.L., et al. Mol. Cell. Biochem. 321 (1-2), 73-83 (2009) :

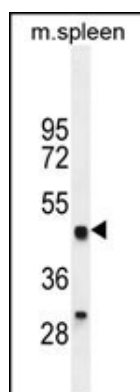
Yang, H., et al. FEBS Lett. 578(3):236-238(2004)

Clark, H.F., et al. Genome Res. 13(10):2265-2270(2003)

Xu, Z.G., et al. Hepatology 38(3):735-744(2003)

**Images**

Western blot analysis of LRP (arrow) using rabbit polyclonal LRP Antibody (Cat. #AP11447a). 293 cell lysates (2 ug/lane) either nontransfected (Lane 1) or transiently transfected (Lane 2) with the LRP gene.



LRP Antibody (Cat. #AP11447a) western blot analysis in mouse spleen tissue lysates (35ug/lane). This demonstrates the LRP antibody detected the LRP protein (arrow).

Please note: All products are 'FOR RESEARCH USE ONLY. NOT FOR USE IN DIAGNOSTIC OR THERAPEUTIC PROCEDURES'.