

# COL4A2 Antibody (N-term)

Affinity Purified Rabbit Polyclonal Antibody (Pab)

Catalog # AP11454a

## Product Information

---

<b>Application</b>	WB, FC, E
<b>Primary Accession</b>	<a href="#">P08572</a>
<b>Other Accession</b>	<a href="#">NP_001837.2</a>
<b>Reactivity</b>	Human, Mouse
<b>Host</b>	Rabbit
<b>Clonality</b>	Polyclonal
<b>Isotype</b>	Rabbit IgG
<b>Clone Names</b>	RB18892
<b>Calculated MW</b>	167553
<b>Antigen Region</b>	156-186

## Additional Information

---

<b>Gene ID</b>	1284
<b>Other Names</b>	Collagen alpha-2(IV) chain, Canstatin, COL4A2
<b>Target/Specificity</b>	This COL4A2 antibody is generated from rabbits immunized with a KLH conjugated synthetic peptide between 156-186 amino acids from the N-terminal region of human COL4A2.
<b>Dilution</b>	WB~~1:1000 FC~~1:10~50 E~~Use at an assay dependent concentration.
<b>Format</b>	Purified polyclonal antibody supplied in PBS with 0.09% (W/V) sodium azide. This antibody is purified through a protein A column, followed by peptide affinity purification.
<b>Storage</b>	Maintain refrigerated at 2-8°C for up to 2 weeks. For long term storage store at -20°C in small aliquots to prevent freeze-thaw cycles.
<b>Precautions</b>	COL4A2 Antibody (N-term) is for research use only and not for use in diagnostic or therapeutic procedures.

## Protein Information

---

<b>Name</b>	COL4A2 ( <a href="#">HGNC:2203</a> )
<b>Function</b>	Type IV collagen is the major structural component of glomerular basement membranes (GBM), forming a 'chicken-wire' meshwork together with laminins, proteoglycans and entactin/nidogen.

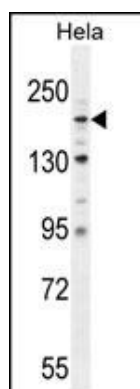
## Background

This gene encodes one of the six subunits of type IV collagen, the major structural component of basement membranes. The C-terminal portion of the protein, known as canstatin, is an inhibitor of angiogenesis and tumor growth. Like the other members of the type IV collagen gene family, this gene is organized in a head-to-head conformation with another type IV collagen gene so that each gene pair shares a common promoter.

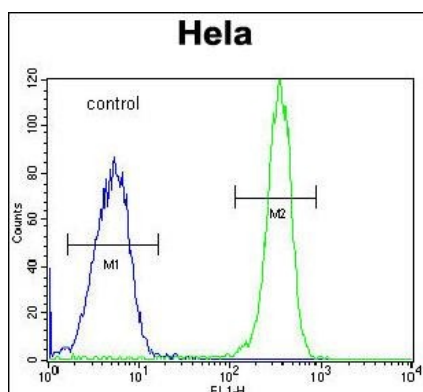
## References

Bianchini, G., et al. J. Clin. Oncol. 28(28):4316-4323(2010)  
Romero, R., et al. Am. J. Obstet. Gynecol. 203 (4), 361 (2010) :  
Bailey, S.D., et al. Diabetes Care 33(10):2250-2253(2010)  
Romero, R., et al. Am. J. Obstet. Gynecol. 202 (5), 431 (2010) :  
Joslyn, G., et al. Alcohol. Clin. Exp. Res. 34(5):800-812(2010)

## Images



COL4A2 Antibody (N-term) (Cat. #AP11454a) western blot analysis in HeLa cell line lysates (35ug/lane). This demonstrates the COL4A2 antibody detected the COL4A2 protein (arrow).



COL4A2 Antibody (N-term) (Cat. #AP11454a) flow cytometric analysis of HeLa cells (right histogram) compared to a negative control cell (left histogram). FITC-conjugated goat-anti-rabbit secondary antibodies were used for the analysis.

## Citations

- [Turbulence Activates Platelet Biogenesis to Enable Clinical Scale Ex Vivo Production.](#)