

CPA2 Antibody (Center)

Affinity Purified Rabbit Polyclonal Antibody (Pab)

Catalog # AP11457c

Product Information

Application	WB, E
Primary Accession	P48052
Other Accession	NP_001860.2
Reactivity	Human
Host	Rabbit
Clonality	Polyclonal
Isotype	Rabbit IgG
Clone Names	RB19004
Calculated MW	47030
Antigen Region	179-208

Additional Information

Gene ID	1358
Other Names	Carboxypeptidase A2, CPA2
Target/Specificity	This CPA2 antibody is generated from rabbits immunized with a KLH conjugated synthetic peptide between 179-208 amino acids from the Central region of human CPA2.
Dilution	WB~~1:1000 E~~Use at an assay dependent concentration.
Format	Purified polyclonal antibody supplied in PBS with 0.09% (W/V) sodium azide. This antibody is purified through a protein A column, followed by peptide affinity purification.
Storage	Maintain refrigerated at 2-8°C for up to 2 weeks. For long term storage store at -20°C in small aliquots to prevent freeze-thaw cycles.
Precautions	CPA2 Antibody (Center) is for research use only and not for use in diagnostic or therapeutic procedures.

Protein Information

Name	CPA2
Function	Carboxypeptidase that catalyzes the release of a C-terminal amino acid, with a preference for large aromatic C-terminal residues.
Cellular Location	Secreted {ECO:0000250 UniProtKB:Q9UI42}.

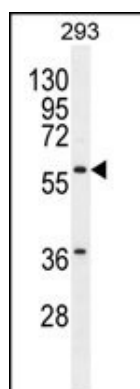
Background

Three different forms of human pancreatic procarboxypeptidase A have been isolated. The encoded protein represents the A2 form, which is a monomeric protein with different biochemical properties from the A1 and A3 forms. The A2 form of pancreatic procarboxypeptidase acts on aromatic C-terminal residues and is a secreted protein.

References

Maestrini, E., et al. Mol. Psychiatry 15(9):954-968(2010)
Rose, J.E., et al. Mol. Med. 16 (7-8), 247-253 (2010) :
Cerdeira-Costa, N., et al. Biochemistry 48(44):10582-10590(2009)
Dantas, G., et al. J. Mol. Biol. 366(4):1209-1221(2007)
Fu, G.K., et al. Genomics 84(1):205-210(2004)

Images



CPA2 Antibody (Center) (Cat. #AP11457c) western blot analysis in 293 cell line lysates (35ug/lane). This demonstrates the CPA2 antibody detected the CPA2 protein (arrow).

Please note: All products are 'FOR RESEARCH USE ONLY. NOT FOR USE IN DIAGNOSTIC OR THERAPEUTIC PROCEDURES'.