

# SCUBE2 Antibody (Center N266)

Affinity Purified Rabbit Polyclonal Antibody (Pab)

Catalog # AP11462c

## Product Information

---

<b>Application</b>	WB, IHC-P, IF, E
<b>Primary Accession</b>	<a href="#">Q9NQ36</a>
<b>Other Accession</b>	<a href="#">NP_066025.2</a> , <a href="#">NP_001164161.1</a>
<b>Reactivity</b>	Human, Mouse, Rat
<b>Host</b>	Rabbit
<b>Clonality</b>	Polyclonal
<b>Isotype</b>	Rabbit IgG
<b>Clone Names</b>	RB19840
<b>Calculated MW</b>	109957
<b>Antigen Region</b>	251-280

## Additional Information

---

<b>Gene ID</b>	57758
<b>Other Names</b>	Signal peptide, CUB and EGF-like domain-containing protein 2, Protein CEGP1, SCUBE2, CEGP1
<b>Target/Specificity</b>	This SCUBE2 antibody is generated from rabbits immunized with a KLH conjugated synthetic peptide between 251-280 amino acids from the Central region of human SCUBE2.
<b>Dilution</b>	WB~~1:1000 IHC-P~~1:100~500 IF~~1:10~50 E~~Use at an assay dependent concentration.
<b>Format</b>	Purified polyclonal antibody supplied in PBS with 0.05% (V/V) Proclin 300. This antibody is prepared by Saturated Ammonium Sulfate (SAS) precipitation followed by dialysis against PBS.
<b>Storage</b>	Maintain refrigerated at 2-8°C for up to 2 weeks. For long term storage store at -20°C in small aliquots to prevent freeze-thaw cycles.
<b>Precautions</b>	SCUBE2 Antibody (Center N266) is for research use only and not for use in diagnostic or therapeutic procedures.

## Protein Information

---

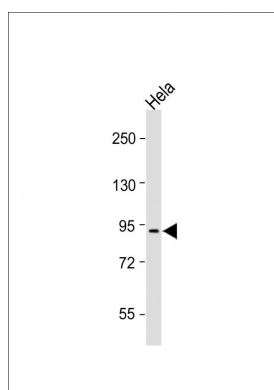
<b>Name</b>	SCUBE2 ( <a href="#">HGNC:30425</a> )
<b>Synonyms</b>	CEGP1

<b>Function</b>	Lipid-binding protein required for SHH long-range signaling by binding to the dually lipid-modified SHH (ShhNp) and by promoting ShhNp mobilization, solubilization and release from the cell membrane (PubMed: <a href="#">22677548</a> , PubMed: <a href="#">22902404</a> ). Acts by enhancing the proteolytic processing (shedding) of the lipid-modified N- and C- terminal of ShhNp at the cell surface (PubMed: <a href="#">24522195</a> ). Synergizes with DISP1 to increase SHH secretion (PubMed: <a href="#">22902404</a> ). Probable cell surface coreceptor for VEGFR2 involved in VEGFR2-mediated angiogenesis (PubMed: <a href="#">27834687</a> ).
<b>Cellular Location</b>	Secreted. Cell surface. Note=Secreted and tethered at the cell surface (PubMed:19480626).
<b>Tissue Location</b>	Expressed in a broad spectrum of adult tissues (PubMed:12270931).

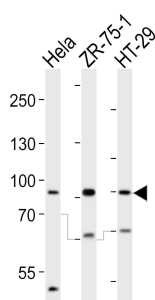
## References

Rose, J.E., et al. Mol. Med. 16 (7-8), 247-253 (2010) :  
Guey, L.T., et al. Eur. Urol. 57(2):283-292(2010)  
Hosgood, H.D. III, et al. Respir Med 103(12):1866-1870(2009)  
Tsai, M.T., et al. Biochem. J. 422(1):119-128(2009)  
Shen, M., et al. Environ. Mol. Mutagen. 50(4):285-290(2009)

## Images

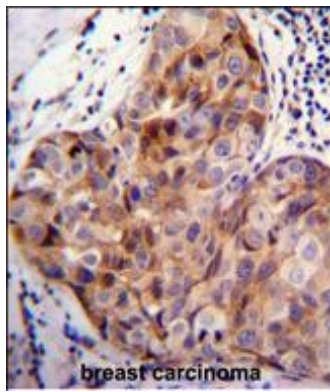


All lanes : Anti-SCUBE2 Antibody (Center N266) at 1:1000 dilution  
Lane 1: HeLa whole cell lysate Lysates/proteins at 20 µg per lane. Secondary Goat Anti-Rabbit IgG, (H+L), Peroxidase conjugated (ASP1615) at 1/15000 dilution.  
Observed band size : 90kDa Blocking/Dilution buffer: 5% NFDM/TBST.

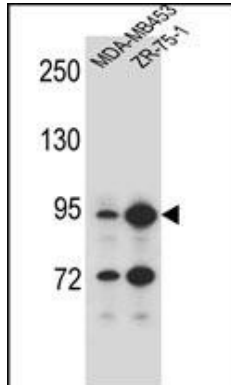


Western blot analysis of lysates from HeLa, ZR-75-1, HT-29 cell line (from left to right), using SCUBE2 Antibody (Center N266)(Cat. #AP11462c). AP11462c was diluted at 1:1000 at each lane. A goat anti-rabbit IgG H&L(HRP) at 1:10000 dilution was used as the secondary antibody. Lysates at 20ug per lane.

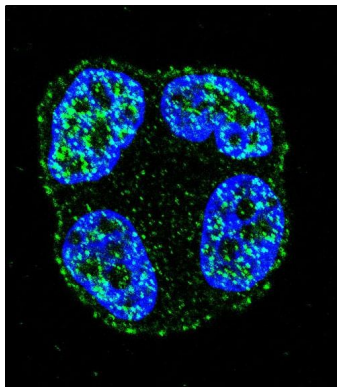
SCUBE2 Antibody (Center N266) (Cat. #AP11462c)immunohistochemistry analysis in formalin fixed and paraffin embedded human breast carcinoma followed by peroxidase conjugation of the secondary antibody and DAB staining.This data demonstrates the use of SCUBE2 Antibody (Center N266) for immunohistochemistry. Clinical relevance has not been



evaluated.



SCUBE2 Antibody (Center N266) (Cat. #AP11462c) western blot analysis in MDA-MB453,ZR-75-1 cell line lysates (35ug/lane).This demonstrates the SCUBE2 antibody detected the SCUBE2 protein (arrow).



Confocal immunofluorescent analysis of SCUBE2 Antibody (Center N266)(Cat#AP11462c) with ZR-75-1 cell followed by Alexa Fluor 488-conjugated goat anti-rabbit IgG (green). DAPI was used to stain the cell nuclear (blue).

Please note: All products are 'FOR RESEARCH USE ONLY. NOT FOR USE IN DIAGNOSTIC OR THERAPEUTIC PROCEDURES'.