

CCDC81 Antibody (Center)

Affinity Purified Rabbit Polyclonal Antibody (Pab)

Catalog # AP11477c

Product Information

Application	FC, WB, E
Primary Accession	Q6ZN84
Other Accession	Q9D5W4 , NP_001149946.1 , NP_068599.3
Reactivity	Human
Predicted	Mouse
Host	Rabbit
Clonality	Polyclonal
Isotype	Rabbit IgG
Clone Names	RB29210
Calculated MW	76084
Antigen Region	380-408

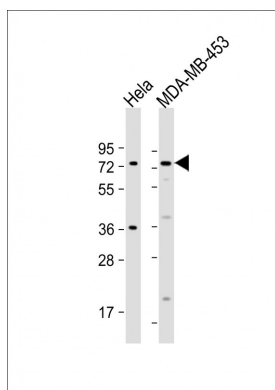
Additional Information

Gene ID	60494
Other Names	Coiled-coil domain-containing protein 81, CCDC81
Target/Specificity	This CCDC81 antibody is generated from rabbits immunized with a KLH conjugated synthetic peptide between 380-408 amino acids from the Central region of human CCDC81.
Dilution	FC~~1:10~50 WB~~1:1000 E~~Use at an assay dependent concentration.
Format	Purified polyclonal antibody supplied in PBS with 0.09% (W/V) sodium azide. This antibody is purified through a protein A column, followed by peptide affinity purification.
Storage	Maintain refrigerated at 2-8°C for up to 2 weeks. For long term storage store at -20°C in small aliquots to prevent freeze-thaw cycles.
Precautions	CCDC81 Antibody (Center) is for research use only and not for use in diagnostic or therapeutic procedures.

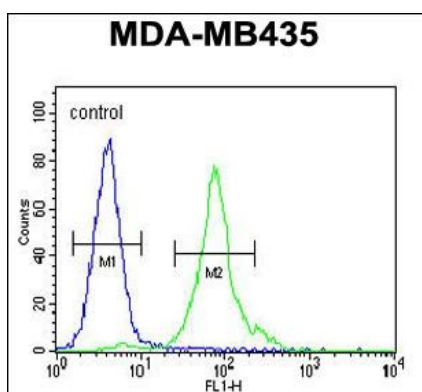
Protein Information

Name	CCDC81
Cellular Location	Cytoplasm, cytoskeleton, microtubule organizing center, centrosome

Images



All lanes : Anti-CCDC81 Antibody (Center) at 1:500 dilution
Lane 1: HeLa whole cell lysate Lane 2: MDA-MB-453 whole cell lysate
Lysates/proteins at 20 µg per lane. Secondary Goat Anti-Rabbit IgG, (H+L), Peroxidase conjugated at 1/10000 dilution. Predicted band size : 76 kDa
Blocking/Dilution buffer: 5% NFDM/TBST.



CCDC81 Antibody (Center) (Cat. #AP11477c) flow cytometric analysis of MDA-MB435 cells (right histogram) compared to a negative control cell (left histogram). FITC-conjugated goat-anti-rabbit secondary antibodies were used for the analysis.

Please note: All products are 'FOR RESEARCH USE ONLY. NOT FOR USE IN DIAGNOSTIC OR THERAPEUTIC PROCEDURES'.