

FADS6 Antibody (C-term)

Affinity Purified Rabbit Polyclonal Antibody (Pab)

Catalog # AP11483b

Product Information

Application	WB, IHC-P, E
Primary Accession	Q8N9I5
Other Accession	NP_835229.2
Reactivity	Human, Mouse
Host	Rabbit
Clonality	Polyclonal
Isotype	Rabbit IgG
Clone Names	RB29293
Calculated MW	40447
Antigen Region	303-332

Additional Information

Gene ID	283985
Other Names	Fatty acid desaturase 6, 11419-, FADS6
Target/Specificity	This FADS6 antibody is generated from rabbits immunized with a KLH conjugated synthetic peptide between 303-332 amino acids from the C-terminal region of human FADS6.
Dilution	WB~~1:1000 IHC-P~~1:100~500 E~~Use at an assay dependent concentration.
Format	Purified polyclonal antibody supplied in PBS with 0.05% (V/V) Proclin 300. This antibody is prepared by Saturated Ammonium Sulfate (SAS) precipitation followed by dialysis against PBS.
Storage	Maintain refrigerated at 2-8°C for up to 2 weeks. For long term storage store at -20°C in small aliquots to prevent freeze-thaw cycles.
Precautions	FADS6 Antibody (C-term) is for research use only and not for use in diagnostic or therapeutic procedures.

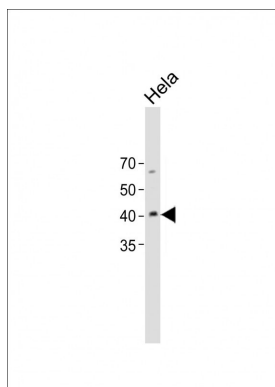
Protein Information

Name	FADS6
Cellular Location	Membrane; Multi-pass membrane protein

References

Strausberg, R.L., et al. Proc. Natl. Acad. Sci. U.S.A. 99(26):16899-16903(2002)

Images



All lanes: Anti-FADS6 Antibody (C-term) at 1:1000 dilution + Hela whole cell lysate Lysates/proteins at 20 µg per lane. Secondary: Goat Anti-Rabbit IgG, (H+L), Peroxidase conjugated (ASP1615) at 1/15000 dilution. Observed band size: 41 KDa Blocking/Dilution buffer: 5% NFDm/TBST.

Please note: All products are 'FOR RESEARCH USE ONLY. NOT FOR USE IN DIAGNOSTIC OR THERAPEUTIC PROCEDURES'.