

TMEM132E Antibody (C-term)

Affinity Purified Rabbit Polyclonal Antibody (Pab)

Catalog # AP11487b

Product Information

Application	WB, FC, E
Primary Accession	Q6IEE7
Other Accession	Q6IEE6 , NP_997196.1
Reactivity	Human, Mouse
Host	Rabbit
Clonality	Polyclonal
Isotype	Rabbit IgG
Clone Names	RB29313
Calculated MW	116150
Antigen Region	704-733

Additional Information

Gene ID	124842
Other Names	Transmembrane protein 132E, TMEM132E
Target/Specificity	This TMEM132E antibody is generated from rabbits immunized with a KLH conjugated synthetic peptide between 704-733 amino acids from the C-terminal region of human TMEM132E.
Dilution	WB~~1:1000 FC~~1:10~50 E~~Use at an assay dependent concentration.
Format	Purified polyclonal antibody supplied in PBS with 0.05% (V/V) Proclin 300. This antibody is prepared by Saturated Ammonium Sulfate (SAS) precipitation followed by dialysis against PBS.
Storage	Maintain refrigerated at 2-8°C for up to 2 weeks. For long term storage store at -20°C in small aliquots to prevent freeze-thaw cycles.
Precautions	TMEM132E Antibody (C-term) is for research use only and not for use in diagnostic or therapeutic procedures.

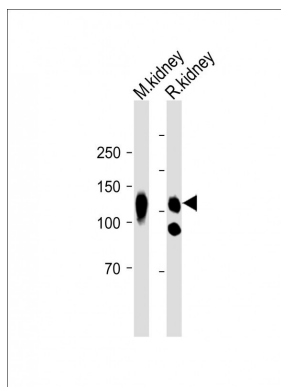
Protein Information

Name	TMEM132E (HGNC:26991)
Function	Required for normal inner ear hair cell function and hearing.
Cellular Location	Membrane; Single-pass type I membrane protein

References

Kehrer-Sawatzki, H., et al. J. Med. Genet. 40 (10), E116 (2003) :

Images



All lanes: Anti-TMEM132E Antibody (C-term) at 1:1000 dilution Lane 1: Mouse kidney lysate Lane 2: Rat kidney lysate Lysates/proteins at 20 µg per lane. Secondary: Goat Anti-Rabbit IgG, (H+L), Peroxidase conjugated (ASP1615) at 1/15000 dilution. Observed band size: 116 KDa Blocking/Dilution buffer: 5% NFDm/TBST.

Citations

- [Whole-exome sequencing identifies a variant in TMEM132E causing autosomal-recessive nonsyndromic hearing loss DFNB99.](#)

Please note: All products are 'FOR RESEARCH USE ONLY. NOT FOR USE IN DIAGNOSTIC OR THERAPEUTIC PROCEDURES'.