

# WDR93 Antibody (C-term)

Affinity Purified Rabbit Polyclonal Antibody (Pab)

Catalog # AP11501b

## Product Information

---

Application	WB, FC, E
Primary Accession	<a href="#">Q6P2C0</a>
Other Accession	<a href="#">NP_064597.1</a>
Reactivity	Human
Host	Rabbit
Clonality	Polyclonal
Isotype	Rabbit IgG
Clone Names	RB29347
Calculated MW	77378
Antigen Region	572-600

## Additional Information

---

Gene ID	56964
Other Names	WD repeat-containing protein 93, WDR93
Target/Specificity	This WDR93 antibody is generated from rabbits immunized with a KLH conjugated synthetic peptide between 572-600 amino acids from the C-terminal region of human WDR93.
Dilution	WB~~1:1000 FC~~1:10~50 E~~Use at an assay dependent concentration.
Format	Purified polyclonal antibody supplied in PBS with 0.09% (W/V) sodium azide. This antibody is purified through a protein A column, followed by peptide affinity purification.
Storage	Maintain refrigerated at 2-8°C for up to 2 weeks. For long term storage store at -20°C in small aliquots to prevent freeze-thaw cycles.
Precautions	WDR93 Antibody (C-term) is for research use only and not for use in diagnostic or therapeutic procedures.

## Protein Information

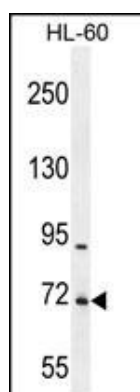
---

Name	WDR93
------	-------

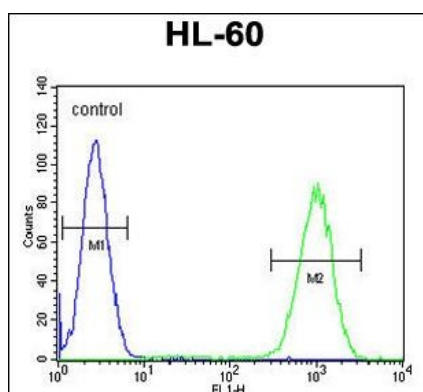
## References

---

## Images



WDR93 Antibody (C-term) (Cat. #AP11501b) western blot analysis in HL-60 cell line lysates (35ug/lane). This demonstrates the WDR93 antibody detected the WDR93 protein (arrow).



WDR93 Antibody (C-term) (Cat. #AP11501b) flow cytometric analysis of HL-60 cells (right histogram) compared to a negative control cell (left histogram). FITC-conjugated goat-anti-rabbit secondary antibodies were used for the analysis.

Please note: All products are 'FOR RESEARCH USE ONLY. NOT FOR USE IN DIAGNOSTIC OR THERAPEUTIC PROCEDURES'.