

# SIGLEC15 Antibody (C-term)

Affinity Purified Rabbit Polyclonal Antibody (Pab)

Catalog # AP11503b

## Product Information

---

<b>Application</b>	WB, IHC-P, E
<b>Primary Accession</b>	<a href="#">Q6ZMC9</a>
<b>Other Accession</b>	<a href="#">NP_998767.1</a>
<b>Reactivity</b>	Human
<b>Host</b>	Rabbit
<b>Clonality</b>	Polyclonal
<b>Isotype</b>	Rabbit IgG
<b>Clone Names</b>	RB29353
<b>Calculated MW</b>	35653
<b>Antigen Region</b>	274-302

## Additional Information

---

<b>Gene ID</b>	284266
<b>Other Names</b>	Sialic acid-binding Ig-like lectin 15, Siglec-15, CD33 antigen-like 3, SIGLEC15, CD33L3
<b>Target/Specificity</b>	This SIGLEC15 antibody is generated from rabbits immunized with a KLH conjugated synthetic peptide between 274-302 amino acids from the C-terminal region of human SIGLEC15.
<b>Dilution</b>	WB~~1:1000 IHC-P~~1:100~500 E~~Use at an assay dependent concentration.
<b>Format</b>	Purified polyclonal antibody supplied in PBS with 0.09% (W/V) sodium azide. This antibody is purified through a protein A column, followed by peptide affinity purification.
<b>Storage</b>	Maintain refrigerated at 2-8°C for up to 2 weeks. For long term storage store at -20°C in small aliquots to prevent freeze-thaw cycles.
<b>Precautions</b>	SIGLEC15 Antibody (C-term) is for research use only and not for use in diagnostic or therapeutic procedures.

## Protein Information

---

<b>Name</b>	SIGLEC15
<b>Synonyms</b>	CD33L3
<b>Function</b>	Binds sialylated glycoproteins.

**Cellular Location**

Membrane; Single-pass type I membrane protein.

**Tissue Location**

Expressed in macrophage and/or dendritic cells of spleen and lymph nodes

**Background**

---

Binds sialylated glycoproteins.

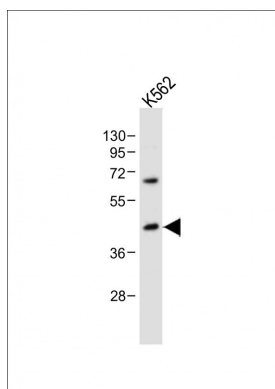
**References**

---

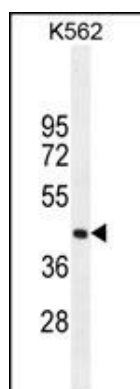
Angata, T., et al. Glycobiology 17(8):838-846(2007)

**Images**

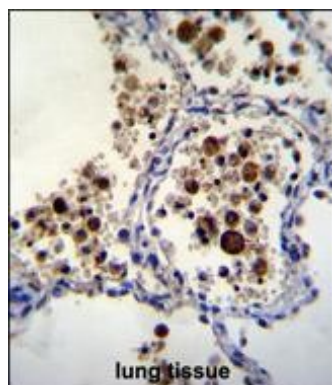
---



Anti-SIGLEC15 Antibody (C-term) at 1:500 dilution + K562 whole cell lysate Lysates/proteins at 20 µg per lane. Secondary Goat Anti-Rabbit IgG, (H+L), Peroxidase conjugated at 1/10000 dilution. Predicted band size : 36 kDa Blocking/Dilution buffer: 5% NFDM/TBST.



SIGLEC15 Antibody (C-term) (Cat. #AP11503b) western blot analysis in K562 cell line lysates (35ug/lane). This demonstrates the SIGLEC15 antibody detected the SIGLEC15 protein (arrow).



SIGLEC15 Antibody (C-term) (Cat. #AP11503b) immunohistochemistry analysis in formalin fixed and paraffin embedded human lung tissue followed by peroxidase conjugation of the secondary antibody and DAB staining. This data demonstrates the use of SIGLEC15 Antibody (C-term) for immunohistochemistry. Clinical relevance has not been evaluated.

Please note: All products are 'FOR RESEARCH USE ONLY. NOT FOR USE IN DIAGNOSTIC OR THERAPEUTIC PROCEDURES'.