

CCDC63 Antibody (C-term)

Affinity Purified Rabbit Polyclonal Antibody (Pab)

Catalog # AP11506b

Product Information

Application	WB, FC, E
Primary Accession	Q8NA47
Other Accession	NP_689804.1
Reactivity	Human
Host	Rabbit
Clonality	Polyclonal
Isotype	Rabbit IgG
Clone Names	RB29374
Calculated MW	66250
Antigen Region	532-560

Additional Information

Gene ID	160762
Other Names	Coiled-coil domain-containing protein 63, CCDC63
Target/Specificity	This CCDC63 antibody is generated from rabbits immunized with a KLH conjugated synthetic peptide between 532-560 amino acids from the C-terminal region of human CCDC63.
Dilution	WB~~1:1000 FC~~1:10~50 E~~Use at an assay dependent concentration.
Format	Purified polyclonal antibody supplied in PBS with 0.09% (W/V) sodium azide. This antibody is purified through a protein A column, followed by peptide affinity purification.
Storage	Maintain refrigerated at 2-8°C for up to 2 weeks. For long term storage store at -20°C in small aliquots to prevent freeze-thaw cycles.
Precautions	CCDC63 Antibody (C-term) is for research use only and not for use in diagnostic or therapeutic procedures.

Protein Information

Name	CCDC63 (HGNC:26669)
Function	Plays a role in spermiogenesis. Involved in the elongation of flagella and the formation of sperm heads.

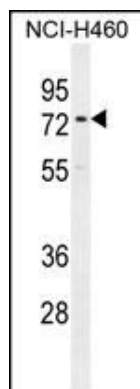
Background

The specific function of this protein remains unknown.

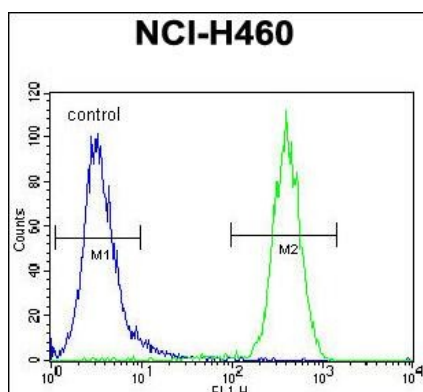
References

Ota, T., et al. Nat. Genet. 36(1):40-45(2004)

Images



CCDC63 Antibody (C-term) (Cat. #AP11506b) western blot analysis in NCI-H460 cell line lysates (35ug/lane). This demonstrates the CCDC63 antibody detected the CCDC63 protein (arrow).



CCDC63 Antibody (C-term) (Cat. #AP11506b) flow cytometric analysis of NCI-H460 cells (right histogram) compared to a negative control cell (left histogram). FITC-conjugated goat-anti-rabbit secondary antibodies were used for the analysis.

Please note: All products are 'FOR RESEARCH USE ONLY. NOT FOR USE IN DIAGNOSTIC OR THERAPEUTIC PROCEDURES'.