

IQCF1 Antibody (N-term)

Affinity Purified Rabbit Polyclonal Antibody (Pab)

Catalog # AP11511a

Product Information

Application	WB, E
Primary Accession	Q8N6M8
Other Accession	NP_689610.2
Reactivity	Human
Host	Rabbit
Clonality	Polyclonal
Isotype	Rabbit IgG
Clone Names	RB29419
Calculated MW	23699
Antigen Region	1-30

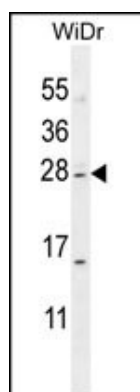
Additional Information

Gene ID	132141
Other Names	IQ domain-containing protein F1, IQCF1
Target/Specificity	This IQCF1 antibody is generated from rabbits immunized with a KLH conjugated synthetic peptide between 1-30 amino acids from the N-terminal region of human IQCF1.
Dilution	WB~~1:1000 E~~Use at an assay dependent concentration.
Format	Purified polyclonal antibody supplied in PBS with 0.09% (W/V) sodium azide. This antibody is purified through a protein A column, followed by peptide affinity purification.
Storage	Maintain refrigerated at 2-8°C for up to 2 weeks. For long term storage store at -20°C in small aliquots to prevent freeze-thaw cycles.
Precautions	IQCF1 Antibody (N-term) is for research use only and not for use in diagnostic or therapeutic procedures.

Protein Information

Name	IQCF1 (HGNC:28607)
Function	Involved in sperm capacitation and acrosome reaction.
Cellular Location	Cytoplasmic vesicle, secretory vesicle, acrosome

Images



IQCF1 Antibody (N-term) (Cat. #AP11511a) western blot analysis in WiDr cell line lysates (35ug/lane). This demonstrates the IQCF1 antibody detected the IQCF1 protein (arrow).

Please note: All products are 'FOR RESEARCH USE ONLY. NOT FOR USE IN DIAGNOSTIC OR THERAPEUTIC PROCEDURES'.