

DTWD1 Antibody (Center)

Affinity Purified Rabbit Polyclonal Antibody (Pab)

Catalog # AP11530c

Product Information

| | |
|-------------------|--|
| Application | WB, E |
| Primary Accession | Q8N5C7 |
| Other Accession | NP_064619.2 , NP_001138427.1 |
| Reactivity | Human |
| Host | Rabbit |
| Clonality | Polyclonal |
| Isotype | Rabbit IgG |
| Clone Names | RB29631 |
| Calculated MW | 35248 |
| Antigen Region | 144-173 |

Additional Information

| | |
|--------------------|--|
| Gene ID | 56986 |
| Other Names | DTW domain-containing protein 1, DTWD1 |
| Target/Specificity | This DTWD1 antibody is generated from rabbits immunized with a KLH conjugated synthetic peptide between 144-173 amino acids from the Central region of human DTWD1. |
| Dilution | WB~~1:1000 E~~Use at an assay dependent concentration. |
| Format | Purified polyclonal antibody supplied in PBS with 0.09% (W/V) sodium azide. This antibody is purified through a protein A column, followed by peptide affinity purification. |
| Storage | Maintain refrigerated at 2-8°C for up to 2 weeks. For long term storage store at -20°C in small aliquots to prevent freeze-thaw cycles. |
| Precautions | DTWD1 Antibody (Center) is for research use only and not for use in diagnostic or therapeutic procedures. |

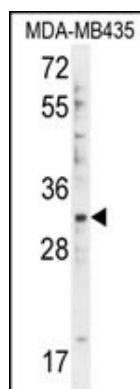
Protein Information

| | |
|----------|--|
| Name | DTWD1 {ECO:0000303 PubMed:31804502, ECO:0000312 HGNC:HGNC:30926} |
| Function | Catalyzes the formation of 3-(3-amino-3-carboxypropyl)uridine (acp3U) at position 20 in the D-loop of several cytoplasmic tRNAs (acp3U(20)). |

References

Strausberg, R.L., et al. Proc. Natl. Acad. Sci. U.S.A. 99(26):16899-16903(2002)

Images



DTWD1 Antibody (Center) (Cat. #AP11530c) western blot analysis in MDA-MB435 cell line lysates (35ug/lane). This demonstrates the DTWD1 antibody detected the DTWD1 protein (arrow).

Please note: All products are 'FOR RESEARCH USE ONLY. NOT FOR USE IN DIAGNOSTIC OR THERAPEUTIC PROCEDURES'.