

# RSBN1 Antibody (N-term)

Affinity Purified Rabbit Polyclonal Antibody (Pab)

Catalog # AP11537a

## Product Information

---

<b>Application</b>	WB, IHC-P, FC, E
<b>Primary Accession</b>	<a href="#">Q5VWQ0</a>
<b>Other Accession</b>	<a href="#">NP_060834.2</a>
<b>Reactivity</b>	Human, Mouse
<b>Host</b>	Rabbit
<b>Clonality</b>	Polyclonal
<b>Isotype</b>	Rabbit IgG
<b>Clone Names</b>	RB30156
<b>Calculated MW</b>	90072
<b>Antigen Region</b>	51-78

## Additional Information

---

<b>Gene ID</b>	54665
<b>Other Names</b>	Round spermatid basic protein 1, RSBN1
<b>Target/Specificity</b>	This RSBN1 antibody is generated from rabbits immunized with a KLH conjugated synthetic peptide between 51-78 amino acids from the N-terminal region of human RSBN1.
<b>Dilution</b>	WB~~1:1000 IHC-P~~1:100~500 FC~~1:10~50 E~~Use at an assay dependent concentration.
<b>Format</b>	Purified polyclonal antibody supplied in PBS with 0.09% (W/V) sodium azide. This antibody is purified through a protein A column, followed by peptide affinity purification.
<b>Storage</b>	Maintain refrigerated at 2-8°C for up to 2 weeks. For long term storage store at -20°C in small aliquots to prevent freeze-thaw cycles.
<b>Precautions</b>	RSBN1 Antibody (N-term) is for research use only and not for use in diagnostic or therapeutic procedures.

## Protein Information

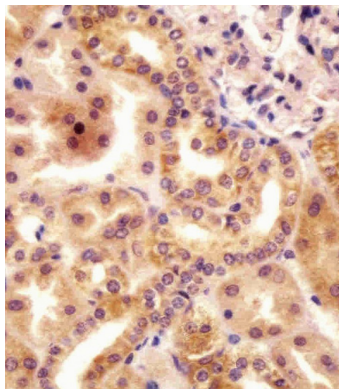
---

<b>Name</b>	RSBN1
<b>Function</b>	Histone demethylase that specifically demethylates dimethylated 'Lys-20' of histone H4 (H4K20me2), thereby modulating chromosome architecture.

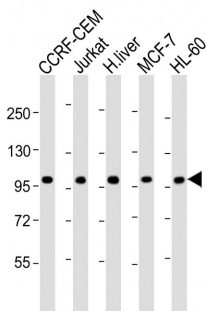
References

Rose, J. Phd, et al. Mol. Med. (2010) In press :  
Pralhad, S., et al. Arthritis Rheum. 60(7):2124-2130(2009)  
Cooper, J.D., et al. Nat. Genet. 40(12):1399-1401(2008)  
Raychaudhuri, S., et al. Nat. Genet. 40(10):1216-1223(2008)  
Smyth, D.J., et al. Diabetes 57(6):1730-1737(2008)

Images



AP11537a staining RSBN1 in human kidney tissue sections by Immunohistochemistry (IHC-P - paraformaldehyde-fixed, paraffin-embedded sections). Tissue was fixed with formaldehyde and blocked with 3% BSA for 0.5 hour at room temperature; antigen retrieval was by heat mediation with a citrate buffer (pH6). Samples were incubated with primary antibody (1/25) for 1 hour at 37°C. A undiluted biotinylated goat polyvalent antibody was used as the secondary antibody.



All lanes : Anti-RSBN1 Antibody (N-term) at 1:2000 dilution Lane 1: CCRF-CEM whole cell lysate Lane 2: Jurkat whole cell lysate Lane 3: human liver lysate Lane 4: MCF-7 whole cell lysate Lane 5: HL-60 whole cell lysate Lysates/proteins at 20 µg per lane. Secondary Goat Anti-Rabbit IgG, (H+L), Peroxidase conjugated at 1/10000 dilution. Predicted band size : 90 kDa Blocking/Dilution buffer: 5% NFDM/TBST.

Please note: All products are 'FOR RESEARCH USE ONLY. NOT FOR USE IN DIAGNOSTIC OR THERAPEUTIC PROCEDURES'.