

RRAS Antibody (Center)

Affinity Purified Rabbit Polyclonal Antibody (Pab)

Catalog # AP11548c

Product Information

Application	WB, E
Primary Accession	P10301
Other Accession	P10833 , NP_006261.1
Reactivity	Human, Mouse
Host	Rabbit
Clonality	Polyclonal
Isotype	Rabbit IgG
Clone Names	RB14590
Calculated MW	23480
Antigen Region	91-123

Additional Information

Gene ID	6237
Other Names	Ras-related protein R-Ras, p23, RRAS
Target/Specificity	This RRAS antibody is generated from rabbits immunized with a KLH conjugated synthetic peptide between 91-123 amino acids from the Central region of human RRAS.
Dilution	WB~~1:1000 E~~Use at an assay dependent concentration.
Format	Purified polyclonal antibody supplied in PBS with 0.09% (W/V) sodium azide. This antibody is purified through a protein A column, followed by peptide affinity purification.
Storage	Maintain refrigerated at 2-8°C for up to 2 weeks. For long term storage store at -20°C in small aliquots to prevent freeze-thaw cycles.
Precautions	RRAS Antibody (Center) is for research use only and not for use in diagnostic or therapeutic procedures.

Protein Information

Name	RRAS
Function	GTP-binding protein with GTPase activity, likely involved in the regulation of MAPK signaling pathway and thereby controlling multiple cellular processes (PubMed: 39809765). Regulates the organization of the actin cytoskeleton (PubMed: 16537651 , PubMed: 18270267). With OSPBL3, modulates integrin

beta-1 (ITGB1) activity (PubMed:[18270267](#)).

Cellular Location

Cell membrane; Lipid-anchor; Cytoplasmic side. Note=Inner surface of plasma membrane possibly with attachment requiring acylation of the C- terminal cysteine (By similarity with RAS)

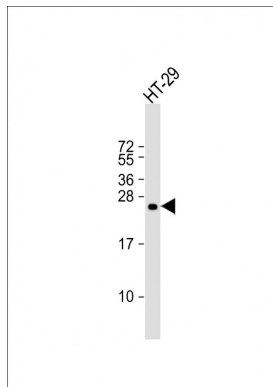
Background

RRAS regulates the organization of the actin cytoskeleton.

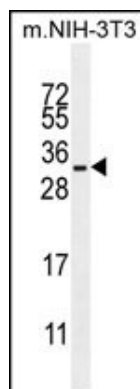
References

- Sakurai, A., et al. Mol. Cell. Biol. 30(12):3086-3098(2010)
Tong, Y., et al. J. Biol. Chem. 284(51):35962-35972(2009)
Inuzuka, T., et al. Biochem. Biophys. Res. Commun. 379(2):510-513(2009)
Xu, L., et al. J. Biol. Chem. 284(5):2706-2718(2009)
Hodkinson, P.S., et al. J. Biol. Chem. 282(39):28991-29001(2007)

Images



Anti-RRAS Antibody (Center) at 1:1000 dilution + HT-29 whole cell lysate Lysates/proteins at 20 µg per lane. Secondary Goat Anti-Rabbit IgG, (H+L), Peroxidase conjugated at 1/10000 dilution. Predicted band size : 23 kDa Blocking/Dilution buffer: 5% NFDM/TBST.



RRAS Antibody (Center) (Cat. #AP11548c) western blot analysis in mouse NIH-3T3 cell line lysates (35ug/lane). This demonstrates the RRAS antibody detected the RRAS protein (arrow).

Please note: All products are 'FOR RESEARCH USE ONLY. NOT FOR USE IN DIAGNOSTIC OR THERAPEUTIC PROCEDURES'.