

COL1A2 Antibody (N-term)

Affinity Purified Rabbit Polyclonal Antibody (Pab)

Catalog # AP11562a

Product Information

Application	WB, E
Primary Accession	P08123
Other Accession	NP_000080.2
Reactivity	Human
Host	Rabbit
Clonality	Polyclonal
Isotype	Rabbit IgG
Clone Names	RB18888
Calculated MW	129314
Antigen Region	16-43

Additional Information

Gene ID	1278
Other Names	Collagen alpha-2(I) chain, Alpha-2 type I collagen, COL1A2
Target/Specificity	This COL1A2 antibody is generated from rabbits immunized with a KLH conjugated synthetic peptide between 16-43 amino acids from the N-terminal region of human COL1A2.
Dilution	WB~~1:1000 E~~Use at an assay dependent concentration.
Format	Purified polyclonal antibody supplied in PBS with 0.09% (W/V) sodium azide. This antibody is purified through a protein A column, followed by peptide affinity purification.
Storage	Maintain refrigerated at 2-8°C for up to 2 weeks. For long term storage store at -20°C in small aliquots to prevent freeze-thaw cycles.
Precautions	COL1A2 Antibody (N-term) is for research use only and not for use in diagnostic or therapeutic procedures.

Protein Information

Name	COL1A2
Function	Type I collagen is a member of group I collagen (fibrillar forming collagen).
Cellular Location	Secreted, extracellular space, extracellular matrix {ECO:0000255 PROSITE-ProRule:PRU00793}

Tissue Location

Forms the fibrils of tendon, ligaments and bones. In bones the fibrils are mineralized with calcium hydroxyapatite

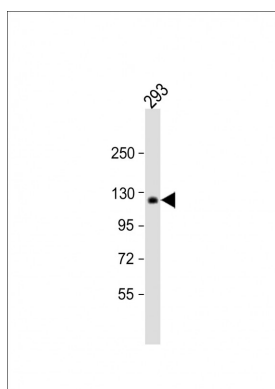
Background

This gene encodes the pro- $\alpha 2$ chain of type I collagen whose triple helix comprises two $\alpha 1$ chains and one $\alpha 2$ chain. Type I is a fibril-forming collagen found in most connective tissues and is abundant in bone, cornea, dermis and tendon. Mutations in this gene are associated with osteogenesis imperfecta types I-IV, Ehlers-Danlos syndrome type VIIB, recessive Ehlers-Danlos syndrome Classical type, idiopathic osteoporosis, and atypical Marfan syndrome. Symptoms associated with mutations in this gene, however, tend to be less severe than mutations in the gene for the $\alpha 1$ chain of type I collagen (COL1A1) reflecting the different role of $\alpha 2$ chains in matrix integrity. Three transcripts, resulting from the use of alternate polyadenylation signals, have been identified for this gene. [provided by R. Dalgleish].

References

Blades, H.Z., et al. Bone 47(5):989-994(2010)
Romero, R., et al. Am. J. Obstet. Gynecol. 203 (4), 361 (2010) :
Bailey, S.D., et al. Diabetes Care 33(10):2250-2253(2010)
Bozec, A., et al. J. Cell Biol. 190(6):1093-1106(2010)
Cheung, M.S., et al. J. Bone Miner. Res. (2010) In press :

Images



Anti-COL1A2 Antibody (N-term) at 1:1000 dilution + 293 whole cell lysate Lysates/proteins at 20 μ g per lane. Secondary Goat Anti-Rabbit IgG, (H+L), Peroxidase conjugated at 1/10000 dilution. Predicted band size : 129 kDa Blocking/Dilution buffer: 5% NFDM/TBST.

Please note: All products are 'FOR RESEARCH USE ONLY. NOT FOR USE IN DIAGNOSTIC OR THERAPEUTIC PROCEDURES'.