

# SPB4 Antibody (C-term)

Affinity Purified Rabbit Polyclonal Antibody (Pab)

Catalog # AP11571b

## Product Information

---

Application	WB, FC, E
Primary Accession	<a href="#">P48594</a>
Other Accession	<a href="#">NP_002965.1</a>
Reactivity	Human, Mouse
Host	Rabbit
Clonality	Polyclonal
Isotype	Rabbit IgG
Clone Names	RB19460
Calculated MW	44854
Antigen Region	268-296

## Additional Information

---

Gene ID	6318
Other Names	Serpin B4, Leupin, Peptidase inhibitor 11, PI-11, Squamous cell carcinoma antigen 2, SCCA-2, SERPINB4, PI11, SCCA2
Target/Specificity	This SPB4 antibody is generated from rabbits immunized with a KLH conjugated synthetic peptide between 268-296 amino acids from the C-terminal region of human SPB4.
Dilution	WB~~1:1000 FC~~1:10~50 E~~Use at an assay dependent concentration.
Format	Purified polyclonal antibody supplied in PBS with 0.05% (V/V) Proclin 300. This antibody is prepared by Saturated Ammonium Sulfate (SAS) precipitation followed by dialysis against PBS.
Storage	Maintain refrigerated at 2-8°C for up to 2 weeks. For long term storage store at -20°C in small aliquots to prevent freeze-thaw cycles.
Precautions	SPB4 Antibody (C-term) is for research use only and not for use in diagnostic or therapeutic procedures.

## Protein Information

---

Name	SERPINB4
Synonyms	PI11, SCCA2
Function	May act as a protease inhibitor to modulate the host immune response

against tumor cells.

**Cellular Location**

Cytoplasm. Note=Seems to also be secreted in plasma by cancerous cells but at a low level

**Tissue Location**

Squamous cells.

## Background

---

SPB4 may act as a protease inhibitor to modulate the host immune response against tumor cells.

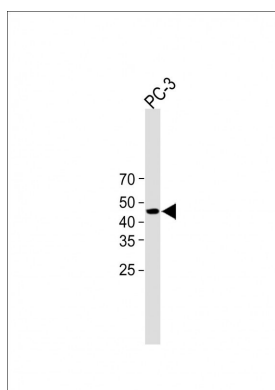
## References

---

Murakami, A., et al. Int. J. Oncol. 36(6):1395-1400(2010)  
Higgins, W.J., et al. J. Biol. Chem. 285(6):3722-3729(2010)  
Villano, G., et al. Int. J. Mol. Med. 25(1):137-143(2010)  
Ahmed, S.T., et al. Biochem. Biophys. Res. Commun. 378(4):821-825(2009)  
Yamane, Y., et al. Int. Arch. Allergy Immunol. 150(1):89-101(2009)

## Images

---



All lanes : Anti-SPB4 Antibody (C-term) at 1:1000 dilution  
Lane 1: PC-3 whole cell lysate Lysates/proteins at 20 µg per lane. Secondary Goat Anti-Rabbit IgG, (H+L), Peroxidase conjugated (ASP1615) at 1/15000 dilution. Observed band size : 45kDa Blocking/Dilution buffer: 5% NFDM/TBST.

Please note: All products are 'FOR RESEARCH USE ONLY. NOT FOR USE IN DIAGNOSTIC OR THERAPEUTIC PROCEDURES'.