

TCF21 Antibody (C-term)

Affinity Purified Rabbit Polyclonal Antibody (Pab)

Catalog # AP11577b

Product Information

Application	FC, WB, E
Primary Accession	O43680
Other Accession	Q5E9S3 , NP_003197.2 , NP_938206.1
Reactivity	Human, Rat, Mouse
Predicted	Bovine
Host	Rabbit
Clonality	Polyclonal
Isotype	Rabbit IgG
Calculated MW	19715
Antigen Region	144-173

Additional Information

Gene ID	6943
Other Names	Transcription factor 21, TCF-21, Capsulin, Class A basic helix-loop-helix protein 23, bHLHA23, Epicardin, Podocyte-expressed 1, Pod-1, TCF21, BHLHA23, POD1
Target/Specificity	This TCF21 antibody is generated from rabbits immunized with a KLH conjugated synthetic peptide between 144-173 amino acids from the C-terminal region of human TCF21.
Dilution	FC~~1:10~50 WB~~1:1000 E~~Use at an assay dependent concentration.
Format	Purified polyclonal antibody supplied in PBS with 0.09% (W/V) sodium azide. This antibody is purified through a protein A column, followed by peptide affinity purification.
Storage	Maintain refrigerated at 2-8°C for up to 2 weeks. For long term storage store at -20°C in small aliquots to prevent freeze-thaw cycles.
Precautions	TCF21 Antibody (C-term) is for research use only and not for use in diagnostic or therapeutic procedures.

Protein Information

Name	TCF21
Synonyms	BHLHA23, POD1
Function	Involved in epithelial-mesenchymal interactions in kidney and lung

morphogenesis that include epithelial differentiation and branching morphogenesis. May play a role in the specification or differentiation of one or more subsets of epicardial cell types.

Cellular Location

Nucleus.

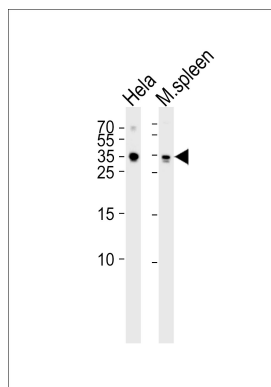
Background

TCF21 encodes a transcription factor of the basic helix-loop-helix family. The TCF21 product is mesoderm specific, and expressed in embryonic epicardium, mesenchyme-derived tissues of lung, gut, gonad, and both mesenchymal and glomerular epithelial cells in the kidney. Two transcript variants encoding the same protein have been found for this gene.

References

Jugessur, A., et al. PLoS ONE 5 (7), E11493 (2010) :
Vieira, A.R., et al. Genet. Med. 10(9):668-674(2008)
Melzer, D., et al. PLoS Genet. 4 (5), E1000072 (2008) :
Smith, L.T., et al. Proc. Natl. Acad. Sci. U.S.A. 103(4):982-987(2006)
Colland, F., et al. Genome Res. 14(7):1324-1332(2004)

Images



Western blot analysis of lysates from HeLa cell line mouse spleen tissue lysate(from left to right), using TCF21 Antibody (C-term)(Cat. #AP11577b). AP11577b was diluted at 1:1000 at each lane. A goat anti-rabbit IgG H&L(HRP) at 1:5000 dilution was used as the secondary antibody. Lysates at 35ug per lane.

Citations

- [Down-regulation of TCF21 by hypermethylation induces cell proliferation, migration and invasion in colorectal cancer.](#)

Please note: All products are 'FOR RESEARCH USE ONLY. NOT FOR USE IN DIAGNOSTIC OR THERAPEUTIC PROCEDURES'.