

CLEC12B Antibody (C-term)

Affinity Purified Rabbit Polyclonal Antibody (Pab)

Catalog # AP11585b

Product Information

Application	WB, IHC-P, E
Primary Accession	Q2HXU8
Other Accession	NP_001123470.1 , NP_995324.2
Reactivity	Human
Host	Rabbit
Clonality	Polyclonal
Isotype	Rabbit IgG
Clone Names	RB29037
Calculated MW	31616
Antigen Region	249-276

Additional Information

Gene ID	387837
Other Names	C-type lectin domain family 12 member B, Macrophage antigen H, CLEC12B
Target/Specificity	This CLEC12B antibody is generated from rabbits immunized with a KLH conjugated synthetic peptide between 249-276 amino acids from the C-terminal region of human CLEC12B.
Dilution	WB~~1:1000 IHC-P~~1:100~500 E~~Use at an assay dependent concentration.
Format	Purified polyclonal antibody supplied in PBS with 0.05% (V/V) Proclin 300. This antibody is purified through a protein A column, followed by peptide affinity purification.
Storage	Maintain refrigerated at 2-8°C for up to 2 weeks. For long term storage store at -20°C in small aliquots to prevent freeze-thaw cycles.
Precautions	CLEC12B Antibody (C-term) is for research use only and not for use in diagnostic or therapeutic procedures.

Protein Information

Name	CLEC12B {ECO:0000303 PubMed:34310951, ECO:0000312 HGNC:HGNC:31966}
Function	Inhibitory receptor postulated to negatively regulate immune and non-immune functions (PubMed: 17562706 , PubMed: 34310951). Upon phosphorylation, recruits SH2 domain-containing PTPN6 and PTPN11

phosphatases to its ITIM motif and antagonizes activation signals (PubMed:[17562706](#), PubMed:[34310951](#)). Although it inhibits KLRK1/NKG2D-mediated signaling, it does not bind known ligands of KLRK1/NKG2D and therefore is not its inhibitory counterpart (PubMed:[17562706](#)). May limit activation of myeloid cell subsets in response to infection or tissue inflammation (PubMed:[17562706](#)). May protect target cells against natural killer cell-mediated lysis (PubMed:[17562706](#)). May negatively regulate cell cycle and differentiation of melanocytes via inactivation of STAT3 (PubMed:[34310951](#)).

Cellular Location

Cell membrane; Single-pass type II membrane protein

Tissue Location

Detected in colon, heart, kidney, liver, lung, mammary gland, ovary, spleen and testis (PubMed:[17562706](#)). Expressed in melanocytes (at protein level) (PubMed:[34310951](#))

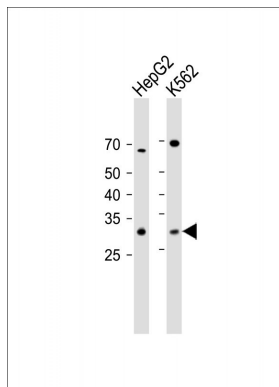
Background

Cell surface receptor that protects target cells against natural killer cell-mediated lysis. Modulates signaling cascades and mediates tyrosine phosphorylation of target MAP kinases.

References

Hoffmann, S.C., et al. J. Biol. Chem. 282(31):22370-22375(2007)
Clark, H.F., et al. Genome Res. 13(10):2265-2270(2003)

Images



All lanes: Anti-CLEC12B Antibody (C-term) at 1:1000 dilution
Lane 1: HepG2 whole cell lysate
Lane 2: K562 whole cell lysate
Lysates/proteins at 20 µg per lane.
Secondary: Goat Anti-Rabbit IgG, (H+L), Peroxidase conjugated (ASP1615) at 1/15000 dilution. Observed band size: 32 KDa
Blocking/Dilution buffer: 5% NFDM/TBST.

Please note: All products are 'FOR RESEARCH USE ONLY. NOT FOR USE IN DIAGNOSTIC OR THERAPEUTIC PROCEDURES'.