

CCDC61 Antibody (N-term)

Affinity Purified Rabbit Polyclonal Antibody (Pab)

Catalog # AP11587a

Product Information

Application	WB, FC, E
Primary Accession	Q9Y6R9
Reactivity	Human
Host	Rabbit
Clonality	Polyclonal
Isotype	Rabbit IgG
Clone Names	RB29053
Calculated MW	57368
Antigen Region	36-65

Additional Information

Gene ID	729440
Other Names	Coiled-coil domain-containing protein 61, CCDC61
Target/Specificity	This CCDC61 antibody is generated from rabbits immunized with a KLH conjugated synthetic peptide between 36-65 amino acids from the N-terminal region of human CCDC61.
Dilution	WB~~1:1000 FC~~1:10~50 E~~Use at an assay dependent concentration.
Format	Purified polyclonal antibody supplied in PBS with 0.09% (W/V) sodium azide. This antibody is purified through a protein A column, followed by peptide affinity purification.
Storage	Maintain refrigerated at 2-8°C for up to 2 weeks. For long term storage store at -20°C in small aliquots to prevent freeze-thaw cycles.
Precautions	CCDC61 Antibody (N-term) is for research use only and not for use in diagnostic or therapeutic procedures.

Protein Information

Name	CCDC61 (HGNC:33629)
Function	Microtubule-binding centrosomal protein required for centriole cohesion, independently of the centrosome-associated protein/CEP250 and rootletin/CROCC linker (PubMed: 31789463). In interphase, required for anchoring microtubule at the mother centriole subdistal appendages and for centrosome positioning (PubMed: 31789463). During mitosis, may be involved

in spindle assembly and chromatin alignment by regulating the organization of spindle microtubules into a symmetrical structure (PubMed:[30354798](#)). Has been proposed to play a role in CEP170 recruitment to centrosomes (PubMed:[30354798](#)). However, this function could not be confirmed (PubMed:[31789463](#)). Plays a non-essential role in ciliogenesis (PubMed:[31789463](#), PubMed:[32375023](#)).

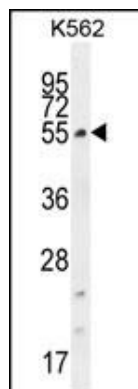
Cellular Location

Cytoplasm, cytoskeleton, microtubule organizing center, centrosome. Cytoplasm, cytoskeleton, microtubule organizing center, centrosome, centriolar satellite. Cytoplasm, cytoskeleton, cilium basal body
Note=Localization at the centriolar satellite is dependent on intact microtubule network (PubMed:[30354798](#)). Localizes at the centriole subdistal appendages and proximal ends (PubMed:[31789463](#)). Localized to centrosomal/satellite-like structures with the onset of centrosome separation in early G2 (PubMed:[30354798](#)).

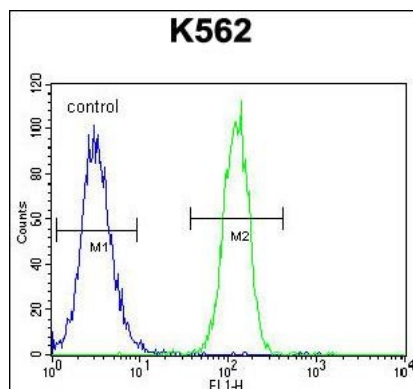
Background

The specific function of the protein remains unknown.

Images



CCDC61 Antibody (N-term) (Cat. #AP11587a) western blot analysis in K562 cell line lysates (35ug/lane). This demonstrates the CCDC61 antibody detected the CCDC61 protein (arrow).



CCDC61 Antibody (N-term) (Cat. #AP11587a) flow cytometric analysis of K562 cells (right histogram) compared to a negative control cell (left histogram). FITC-conjugated goat-anti-rabbit secondary antibodies were used for the analysis.

Please note: All products are 'FOR RESEARCH USE ONLY. NOT FOR USE IN DIAGNOSTIC OR THERAPEUTIC PROCEDURES'.