

ECT2L Antibody (C-term)

Affinity Purified Rabbit Polyclonal Antibody (Pab)

Catalog # AP11601b

Product Information

| | |
|--------------------------|---|
| Application | IHC-P, WB, E |
| Primary Accession | Q008S8 |
| Other Accession | NP_001181966.1 , NP_001071174.1 |
| Reactivity | Human |
| Host | Rabbit |
| Clonality | Polyclonal |
| Isotype | Rabbit IgG |
| Clone Names | RB29214 |
| Calculated MW | 104880 |
| Antigen Region | 725-753 |

Additional Information

| | |
|---------------------------|---|
| Gene ID | 345930 |
| Other Names | Epithelial cell-transforming sequence 2 oncogene-like, Lung-specific F-box and DH domain-containing protein, Putative guanine nucleotide exchange factor LFDH, ECT2L, C6orf91, LFDH |
| Target/Specificity | This ECT2L antibody is generated from rabbits immunized with a KLH conjugated synthetic peptide between 725-753 amino acids from the C-terminal region of human ECT2L. |
| Dilution | IHC-P~~1:100~500 WB~~1:1000 E~~Use at an assay dependent concentration. |
| Format | Purified polyclonal antibody supplied in PBS with 0.09% (W/V) sodium azide. This antibody is purified through a protein A column, followed by peptide affinity purification. |
| Storage | Maintain refrigerated at 2-8°C for up to 2 weeks. For long term storage store at -20°C in small aliquots to prevent freeze-thaw cycles. |
| Precautions | ECT2L Antibody (C-term) is for research use only and not for use in diagnostic or therapeutic procedures. |

Protein Information

| | |
|-----------------|---------------|
| Name | ECT2L |
| Synonyms | C6orf91, LFDH |

Function

May act as a guanine nucleotide exchange factor (GEF).

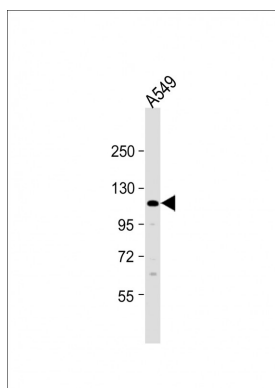
Background

ECT2L may act as a guanine nucleotide exchange factor (GEF) (By similarity).

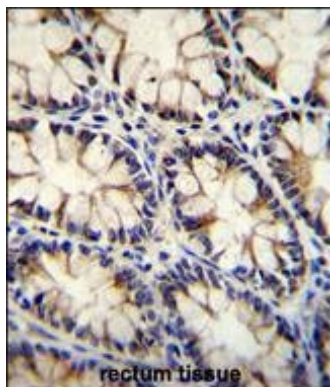
References

Rose, J.E., et al. Mol. Med. 16 (7-8), 247-253 (2010) :

Images



Anti-ECT2L Antibody (C-term) at 1:1000 dilution + A549 whole cell lysate Lysates/proteins at 20 µg per lane. Secondary Goat Anti-Rabbit IgG, (H+L), Peroxidase conjugated at 1/10000 dilution. Predicted band size : 105 kDa Blocking/Dilution buffer: 5% NFDM/TBST.



ECT2L Antibody (C-term) (Cat. #AP11601b) immunohistochemistry analysis in formalin fixed and paraffin embedded human rectum tissue followed by peroxidase conjugation of the secondary antibody and DAB staining. This data demonstrates the use of ECT2L Antibody (C-term) for immunohistochemistry. Clinical relevance has not been evaluated.

Please note: All products are 'FOR RESEARCH USE ONLY. NOT FOR USE IN DIAGNOSTIC OR THERAPEUTIC PROCEDURES'.