

C19orf38 Antibody (Center)

Affinity Purified Rabbit Polyclonal Antibody (Pab)

Catalog # AP11603c

Product Information

Application	WB, E
Primary Accession	A8MVS5
Other Accession	NP_001129954.1
Reactivity	Human
Host	Rabbit
Clonality	Polyclonal
Isotype	Rabbit IgG
Clone Names	RB29291
Calculated MW	24753
Antigen Region	129-158

Additional Information

Gene ID	255809
Other Names	Protein HIDE1, HIDE1, C19orf38
Target/Specificity	This C19orf38 antibody is generated from rabbits immunized with a KLH conjugated synthetic peptide between 129-158 amino acids from the Central region of human C19orf38.
Dilution	WB~~1:1000 E~~Use at an assay dependent concentration.
Format	Purified polyclonal antibody supplied in PBS with 0.09% (W/V) sodium azide. This antibody is purified through a protein A column, followed by peptide affinity purification.
Storage	Maintain refrigerated at 2-8°C for up to 2 weeks. For long term storage store at -20°C in small aliquots to prevent freeze-thaw cycles.
Precautions	C19orf38 Antibody (Center) is for research use only and not for use in diagnostic or therapeutic procedures.

Protein Information

Name	HIDE1
Synonyms	C19orf38
Cellular Location	Membrane; Single-pass type I membrane protein.

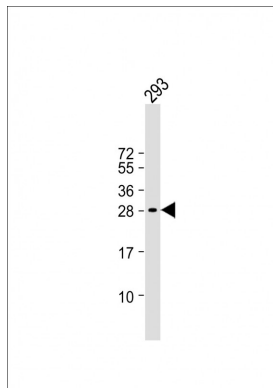
Background

The specific function of the protein remains unknown.

References

Grimwood, J., et al. Nature 428(6982):529-535(2004)

Images



Anti-C19orf38 Antibody (Center) at 1:1000 dilution + 293 whole cell lysate Lysates/proteins at 20 µg per lane. Secondary Goat Anti-Rabbit IgG, (H+L), Peroxidase conjugated at 1/10000 dilution. Predicted band size : 25 kDa Blocking/Dilution buffer: 5% NFDM/TBST.

Please note: All products are 'FOR RESEARCH USE ONLY. NOT FOR USE IN DIAGNOSTIC OR THERAPEUTIC PROCEDURES'.