

FAM118B Antibody (Center)

Affinity Purified Rabbit Polyclonal Antibody (Pab)

Catalog # AP11613c

Product Information

| | |
|--------------------------|---|
| Application | WB, E |
| Primary Accession | Q9BPY3 |
| Other Accession | Q4QQT2 , Q8C569 , Q4R836 , Q5E977 , NP_078832.1 |
| Reactivity | Human |
| Predicted | Bovine, Monkey, Mouse, Rat |
| Host | Rabbit |
| Clonality | Polyclonal |
| Isotype | Rabbit IgG |
| Clone Names | RB29539 |
| Calculated MW | 39499 |
| Antigen Region | 212-240 |

Additional Information

| | |
|---------------------------|--|
| Gene ID | 79607 |
| Other Names | Protein FAM118B, FAM118B |
| Target/Specificity | This FAM118B antibody is generated from rabbits immunized with a KLH conjugated synthetic peptide between 212-240 amino acids from the Central region of human FAM118B. |
| Dilution | WB~~1:1000 E~~Use at an assay dependent concentration. |
| Format | Purified polyclonal antibody supplied in PBS with 0.09% (W/V) sodium azide. This antibody is purified through a protein A column, followed by peptide affinity purification. |
| Storage | Maintain refrigerated at 2-8°C for up to 2 weeks. For long term storage store at -20°C in small aliquots to prevent freeze-thaw cycles. |
| Precautions | FAM118B Antibody (Center) is for research use only and not for use in diagnostic or therapeutic procedures. |

Protein Information

| | |
|--------------------------|--|
| Name | FAM118B |
| Function | May play a role in Cajal bodies formation. |
| Cellular Location | Nucleus, Cajal body |

Background

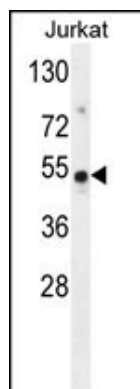
The specific function of the protein remains unknown.

References

Lamesch, P., et al. Genomics 89(3):307-315(2007)

Wang, A.G., et al. Biochem. Biophys. Res. Commun. 345(3):1022-1032(2006)

Images



FAM118B Antibody (Center) (Cat. #AP11613c) western blot analysis in Jurkat cell line lysates (35ug/lane). This demonstrates the FAM118B antibody detected the FAM118B protein (arrow).

Please note: All products are 'FOR RESEARCH USE ONLY. NOT FOR USE IN DIAGNOSTIC OR THERAPEUTIC PROCEDURES'.