

TTC23L Antibody (C-term)

Affinity Purified Rabbit Polyclonal Antibody (Pab)

Catalog # AP11614b

Product Information

Application	WB, IHC-P, E
Primary Accession	Q6PF05
Other Accession	NP_653326.3
Reactivity	Mouse
Host	Rabbit
Clonality	Polyclonal
Isotype	Rabbit IgG
Clone Names	RB29543
Calculated MW	40837
Antigen Region	319-348

Additional Information

Gene ID	153657
Other Names	Tetratricopeptide repeat protein 23-like, TTC23L
Target/Specificity	This TTC23L antibody is generated from rabbits immunized with a KLH conjugated synthetic peptide between 319-348 amino acids from the C-terminal region of human TTC23L.
Dilution	WB~~1:1000 IHC-P~~1:100~500 E~~Use at an assay dependent concentration.
Format	Purified polyclonal antibody supplied in PBS with 0.09% (W/V) sodium azide. This antibody is purified through a protein A column, followed by peptide affinity purification.
Storage	Maintain refrigerated at 2-8°C for up to 2 weeks. For long term storage store at -20°C in small aliquots to prevent freeze-thaw cycles.
Precautions	TTC23L Antibody (C-term) is for research use only and not for use in diagnostic or therapeutic procedures.

Protein Information

Name	TTC23L
Cellular Location	Cytoplasm, cytoskeleton, microtubule organizing center, centrosome. Cytoplasm, cytoskeleton, spindle. Midbody. Note=Exhibits dynamic subcellular localization during the cell cycle. In prophase cells, detected on split centrosomes. Translocates to the mitotic spindles during metaphase and

early anaphase, then to the midbody and cleavage furrow in late anaphase.

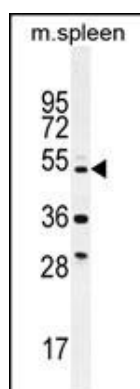
Background

The specific function of the protein remains unknown.

References

Rose, J.E., et al. Mol. Med. 16 (7-8), 247-253 (2010) :
Lamesch, P., et al. Genomics 89(3):307-315(2007)

Images



TTC23L Antibody (C-term) (Cat. #AP11614b) western blot analysis in mouse spleen tissue lysates (35ug/lane). This demonstrates the TTC23L antibody detected the TTC23L protein (arrow).



TTC23L Antibody (C-term) (Cat. #AP11614b) immunohistochemistry analysis in formalin fixed and paraffin embedded human testis tissue followed by peroxidase conjugation of the secondary antibody and DAB staining. This data demonstrates the use of TTC23L Antibody (C-term) for immunohistochemistry. Clinical relevance has not been evaluated.

Please note: All products are 'FOR RESEARCH USE ONLY. NOT FOR USE IN DIAGNOSTIC OR THERAPEUTIC PROCEDURES'.