

## PRSS21 Antibody (Center)

Affinity Purified Rabbit Polyclonal Antibody (Pab)

Catalog # AP11645c

### Product Information

---

<b>Application</b>	WB, IHC-P, E
<b>Primary Accession</b>	<a href="#">Q9Y6M0</a>
<b>Other Accession</b>	<a href="#">NP_659206.1</a> , <a href="#">NP_006790.1</a>
<b>Reactivity</b>	Human, Mouse
<b>Host</b>	Rabbit
<b>Clonality</b>	Polyclonal
<b>Isotype</b>	Rabbit IgG
<b>Clone Names</b>	RB31143
<b>Calculated MW</b>	34884
<b>Antigen Region</b>	165-193

### Additional Information

---

<b>Gene ID</b>	10942
<b>Other Names</b>	Testisin, 3421-, Eosinophil serine protease 1, ESP-1, Serine protease 21, PRSS21, ESP1, TEST1
<b>Target/Specificity</b>	This PRSS21 antibody is generated from rabbits immunized with a KLH conjugated synthetic peptide between 165-193 amino acids from the Central region of human PRSS21.
<b>Dilution</b>	WB~~1:1000 IHC-P~~1:100~500 E~~Use at an assay dependent concentration.
<b>Format</b>	Purified polyclonal antibody supplied in PBS with 0.09% (W/V) sodium azide. This antibody is purified through a protein A column, followed by peptide affinity purification.
<b>Storage</b>	Maintain refrigerated at 2-8°C for up to 2 weeks. For long term storage store at -20°C in small aliquots to prevent freeze-thaw cycles.
<b>Precautions</b>	PRSS21 Antibody (Center) is for research use only and not for use in diagnostic or therapeutic procedures.

### Protein Information

---

<b>Name</b>	PRSS21
<b>Synonyms</b>	ESP1, TEST1
<b>Function</b>	Could regulate proteolytic events associated with testicular germ cell

maturation.

**Cellular Location**

Cell membrane; Lipid-anchor, GPI- anchor

**Tissue Location**

Expressed predominantly in premeiotic testicular germ cells, mostly late pachytene and diplotene spermatocytes

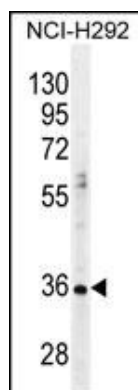
## Background

This gene encodes a cell-surface anchored serine protease, which is a member of the trypsin family of serine proteases. It is predicted to be active on peptide linkages involving the carboxyl group of lysine or arginine. The protein localizes to the cytoplasm and the plasma membrane of premeiotic testicular germ cells and it may be involved in progression of testicular tumors of germ cell origin. Alternative splicing of this gene results in three transcript variants encoding three different isoforms. [provided by RefSeq].

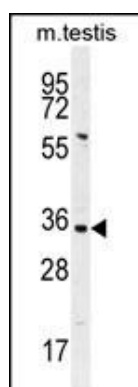
## References

Yeom, S.Y., et al. FEBS Lett. 584(8):1469-1475(2010)  
Netzel-Arnett, S., et al. Biol. Reprod. 81(5):921-932(2009)  
Kempkensteffen, C., et al. J. Cancer Res. Clin. Oncol. 132(12):765-770(2006)  
Manton, K.J., et al. Br. J. Cancer 92(4):760-769(2005)  
Clark, H.F., et al. Genome Res. 13(10):2265-2270(2003)

## Images



PRSS21 Antibody (Center) (Cat. #AP11645c) western blot analysis in NCI-H292 cell line lysates (35ug/lane). This demonstrates the PRSS21 antibody detected the PRSS21 protein (arrow).



PRSS21 Antibody (Center) (Cat. #AP11645c) western blot analysis in mouse testis tissue lysates (35ug/lane). This demonstrates the PRSS21 antibody detected the PRSS21 protein (arrow).

PRSS21 Antibody (Center) (Cat. #AP11645c) immunohistochemistry analysis in formalin fixed and paraffin embedded human testis tissue followed by peroxidase conjugation of the secondary antibody and DAB staining. This data demonstrates the



use of PRSS21 Antibody (Center) for immunohistochemistry. Clinical relevance has not been evaluated.

## Citations

---

- [A+-helix of protein C inhibitor \(PCI\) is a cell-penetrating peptide that mediates cell membrane permeation of PCI.](#)

Please note: All products are 'FOR RESEARCH USE ONLY. NOT FOR USE IN DIAGNOSTIC OR THERAPEUTIC PROCEDURES'.