

## GALNS Antibody (Center)

Affinity Purified Rabbit Polyclonal Antibody (Pab)

Catalog # AP11646C

### Product Information

---

<b>Application</b>	WB, IHC-P, IF, FC, E
<b>Primary Accession</b>	<a href="#">P34059</a>
<b>Other Accession</b>	<a href="#">Q32KJ6</a> , <a href="#">Q8WNO7</a> , <a href="#">Q571E4</a> , <a href="#">NP_000503.1</a>
<b>Reactivity</b>	Human
<b>Predicted</b>	Mouse, Pig, Rat
<b>Host</b>	Rabbit
<b>Clonality</b>	Polyclonal
<b>Isotype</b>	Rabbit IgG
<b>Clone Names</b>	RB31386
<b>Calculated MW</b>	58026
<b>Antigen Region</b>	236-263

### Additional Information

---

<b>Gene ID</b>	2588
<b>Other Names</b>	N-acetylgalactosamine-6-sulfatase, Chondroitinsulfatase, Chondroitinase, Galactose-6-sulfate sulfatase, GalN6S, N-acetylgalactosamine-6-sulfate sulfatase, GalNAc6S sulfatase, GALNS
<b>Target/Specificity</b>	This GALNS antibody is generated from rabbits immunized with a KLH conjugated synthetic peptide between 236-263 amino acids from the Central region of human GALNS.
<b>Dilution</b>	WB~~1:2000 IHC-P~~1:100~500 IF~~1:10~50 FC~~1:10~50 E~~Use at an assay dependent concentration.
<b>Format</b>	Purified polyclonal antibody supplied in PBS with 0.09% (W/V) sodium azide. This antibody is purified through a protein A column, followed by peptide affinity purification.
<b>Storage</b>	Maintain refrigerated at 2-8°C for up to 2 weeks. For long term storage store at -20°C in small aliquots to prevent freeze-thaw cycles.
<b>Precautions</b>	GALNS Antibody (Center) is for research use only and not for use in diagnostic or therapeutic procedures.

### Protein Information

---

<b>Name</b>	GALNS
-------------	-------

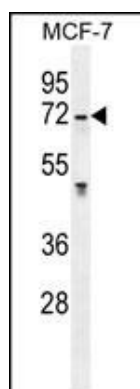
## Background

This gene encodes N-acetylgalactosamine-6-sulfatase which is a lysosomal exohydrolase required for the degradation of the glycosaminoglycans, keratan sulfate, and chondroitin 6-sulfate. Sequence alterations including point, missense and nonsense mutations, as well as those that affect splicing, result in a deficiency of this enzyme. Deficiencies of this enzyme lead to Morquio A syndrome, a lysosomal storage disorder. [provided by RefSeq].

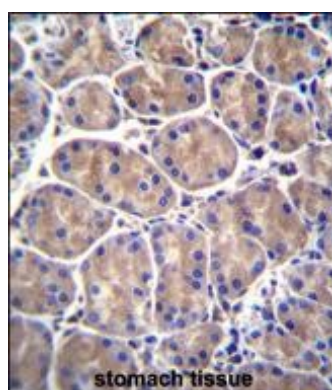
## References

Rose, J.E., et al. Mol. Med. 16 (7-8), 247-253 (2010) :  
Bank, R.A., et al. Mol. Genet. Metab. 97(3):196-201(2009)  
Yan, S., et al. Biopolymers 92(5):399-404(2009)  
Carraresi, L., et al. Clin. Chim. Acta 397 (1-2), 72-76 (2008) :  
Bhattacharyya, S., et al. J. Biol. Chem. 283(15):9523-9530(2008)

## Images

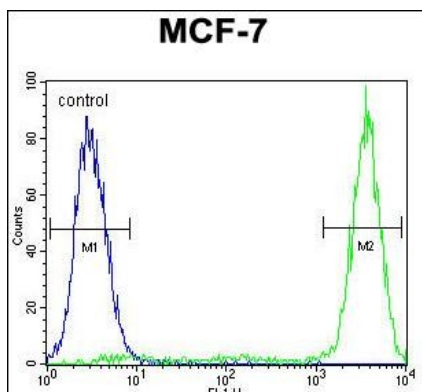
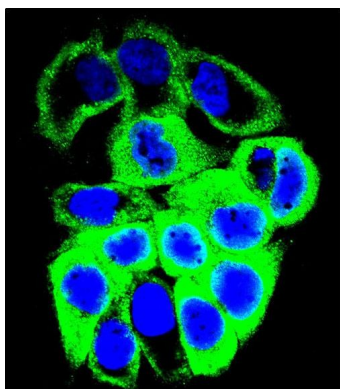


GALNS Antibody (Center) (Cat. #AP11646c) western blot analysis in MCF-7 cell line lysates (35ug/lane). This demonstrates the GALNS antibody detected the GALNS protein (arrow).



GALNS Antibody (Center) (Cat. #AP11646c) immunohistochemistry analysis in formalin fixed and paraffin embedded human stomach tissue followed by peroxidase conjugation of the secondary antibody and DAB staining. This data demonstrates the use of GALNS Antibody (Center) for immunohistochemistry. Clinical relevance has not been evaluated.

Confocal immunofluorescent analysis of GALNS Antibody (Center) (Cat#AP11646c) with MCF-7 cell followed by Alexa Fluor 488-conjugated goat anti-rabbit IgG (green). DAPI was used to stain the cell nuclear (blue).



GALNS Antibody (Center) (Cat. #AP11646c) flow cytometric analysis of MCF-7 cells (right histogram) compared to a negative control cell (left histogram). FITC-conjugated goat-anti-rabbit secondary antibodies were used for the analysis.

Please note: All products are 'FOR RESEARCH USE ONLY. NOT FOR USE IN DIAGNOSTIC OR THERAPEUTIC PROCEDURES'.