

YI016 Antibody (C-term)

Affinity Purified Rabbit Polyclonal Antibody (Pab)

Catalog # AP11654b

Product Information

Application	IHC-P, WB, IF, FC, E
Primary Accession	A6NKZ8
Other Accession	A6NNZ2
Reactivity	Human
Host	Rabbit
Clonality	Polyclonal
Isotype	Rabbit IgG
Clone Names	RB31526
Antigen Region	253-280

Additional Information

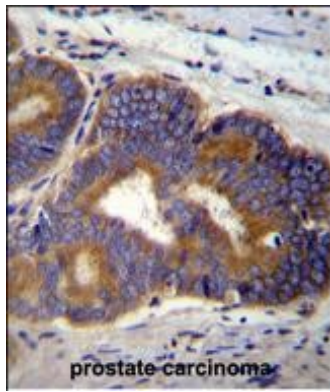
Other Names	Putative tubulin beta chain-like protein ENSP00000290377
Target/Specificity	This YI016 antibody is generated from rabbits immunized with a KLH conjugated synthetic peptide between 253-280 amino acids from the C-terminal region of human YI016.
Dilution	IHC-P~~1:100~500 WB~~1:1000 IF~~1:10~50 FC~~1:10~50 E~~Use at an assay dependent concentration.
Format	Purified polyclonal antibody supplied in PBS with 0.09% (W/V) sodium azide. This antibody is purified through a protein A column, followed by peptide affinity purification.
Storage	Maintain refrigerated at 2-8°C for up to 2 weeks. For long term storage store at -20°C in small aliquots to prevent freeze-thaw cycles.
Precautions	YI016 Antibody (C-term) is for research use only and not for use in diagnostic or therapeutic procedures.

Protein Information

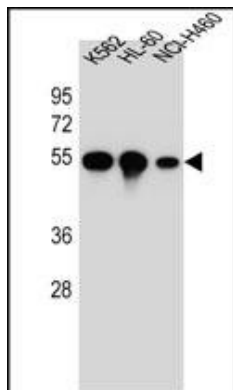
Background

Tubulin is the major constituent of microtubules. It binds two moles of GTP, one at an exchangeable site on the beta chain and one at a non-exchangeable site on the alpha-chain (By similarity).

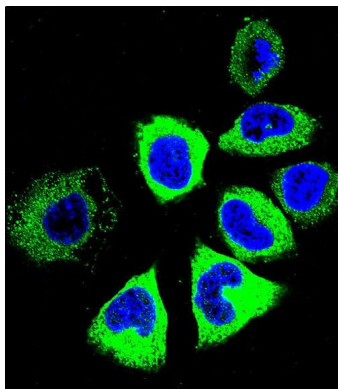
Images



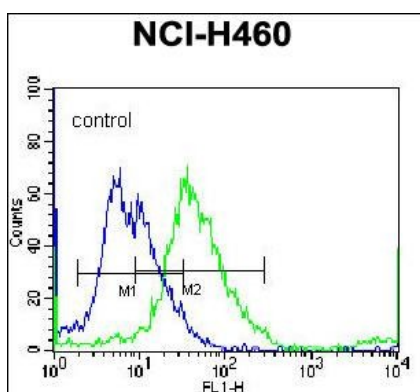
YI016 Antibody (C-term) (Cat. #AP11654b) immunohistochemistry analysis in formalin fixed and paraffin embedded human prostate carcinoma followed by peroxidase conjugation of the secondary antibody and DAB staining. This data demonstrates the use of YI016 Antibody (C-term) for immunohistochemistry. Clinical relevance has not been evaluated.



YI016 Antibody (C-term) (Cat. #AP11654b) western blot analysis in K562, HL-60, NCI-H460 cell line lysates (35ug/lane). This demonstrates the YI016 antibody detected the YI016 protein (arrow).



Confocal immunofluorescent analysis of YI016 Antibody (C-term) (Cat. #AP11654b) with NCI-H460 cell followed by Alexa Fluor 488-conjugated goat anti-rabbit IgG (green). DAPI was used to stain the cell nuclei (blue).



YI016 Antibody (C-term) (Cat. #AP11654b) flow cytometric analysis of NCI-H460 cells (right histogram) compared to a negative control cell (left histogram). FITC-conjugated donkey-anti-rabbit secondary antibodies were used for the analysis.

Please note: All products are 'FOR RESEARCH USE ONLY. NOT FOR USE IN DIAGNOSTIC OR THERAPEUTIC PROCEDURES'.