

PCDH20 Antibody (Center)

Affinity Purified Rabbit Polyclonal Antibody (Pab)

Catalog # AP11655C

Product Information

Application	WB, IHC-P, IF, FC, E
Primary Accession	Q8N6Y1
Other Accession	NP_073754.2
Reactivity	Human, Rat, Mouse
Host	Rabbit
Clonality	Polyclonal
Isotype	Rabbit IgG
Clone Names	RB31527
Calculated MW	104919
Antigen Region	445-472

Additional Information

Gene ID	64881
Other Names	Protocadherin-20, Protocadherin-13, PCDH20, PCDH13
Target/Specificity	This PCDH20 antibody is generated from rabbits immunized with a KLH conjugated synthetic peptide between 445-472 amino acids from the Central region of human PCDH20.
Dilution	WB~~1:1000 IHC-P~~1:100~500 IF~~1:10~50 FC~~1:10~50 E~~Use at an assay dependent concentration.
Format	Purified polyclonal antibody supplied in PBS with 0.09% (W/V) sodium azide. This antibody is purified through a protein A column, followed by peptide affinity purification.
Storage	Maintain refrigerated at 2-8°C for up to 2 weeks. For long term storage store at -20°C in small aliquots to prevent freeze-thaw cycles.
Precautions	PCDH20 Antibody (Center) is for research use only and not for use in diagnostic or therapeutic procedures.

Protein Information

Name	PCDH20
Synonyms	PCDH13
Function	Potential calcium-dependent cell-adhesion protein.

Cellular Location

Cell membrane; Single-pass type I membrane protein

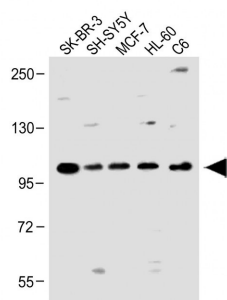
Background

This gene belongs to the protocadherin gene family, a subfamily of the cadherin superfamily. This gene encodes a protein which contains 6 extracellular cadherin domains, a transmembrane domain and a cytoplasmic tail differing from those of the classical cadherins. Although its specific function is undetermined, the cadherin-related neuronal receptor is thought to play a role in the establishment and function of specific cell-cell connections in the brain.

References

Suzuki, S.T. Exp. Cell Res. 261(1):13-18(2000)
Nollet, F., et al. J. Mol. Biol. 299(3):551-572(2000)
Yagi, T., et al. Genes Dev. 14(10):1169-1180(2000)
Wu, Q., et al. Proc. Natl. Acad. Sci. U.S.A. 97(7):3124-3129(2000)
Cross, S.H., et al. Nat. Genet. 6(3):236-244(1994)

Images



All lanes : Anti-PCDH20 Antibody (Center) at 1:1000 dilution Lane 1: SK-BR-3 whole cell lysate Lane 2: SH-SY5Y whole cell lysate Lane 3: MCF-7 whole cell lysate Lane 4: HL-60 whole cell lysate Lane 5: C6 whole cell lysate Lysates/proteins at 20 µg per lane. Secondary Goat Anti-Rabbit IgG, (H+L), Peroxidase conjugated at 1/10000 dilution. Predicted band size : 105 kDa Blocking/Dilution buffer: 5% NFDM/TBST.

Please note: All products are 'FOR RESEARCH USE ONLY. NOT FOR USE IN DIAGNOSTIC OR THERAPEUTIC PROCEDURES'.