

CHRND Antibody (Center)

Affinity Purified Rabbit Polyclonal Antibody (Pab)

Catalog # AP11657c

Product Information

Application	WB, FC, E
Primary Accession	Q07001
Other Accession	NP_000742.1
Reactivity	Human
Host	Rabbit
Clonality	Polyclonal
Isotype	Rabbit IgG
Clone Names	RB31740
Calculated MW	58895
Antigen Region	168-196

Additional Information

Gene ID	1144
Other Names	Acetylcholine receptor subunit delta, CHRND, ACHRD
Target/Specificity	This CHRND antibody is generated from rabbits immunized with a KLH conjugated synthetic peptide between 168-196 amino acids from the Central region of human CHRND.
Dilution	WB~~1:1000 FC~~1:10~50 E~~Use at an assay dependent concentration.
Format	Purified polyclonal antibody supplied in PBS with 0.09% (W/V) sodium azide. This antibody is purified through a protein A column, followed by peptide affinity purification.
Storage	Maintain refrigerated at 2-8°C for up to 2 weeks. For long term storage store at -20°C in small aliquots to prevent freeze-thaw cycles.
Precautions	CHRND Antibody (Center) is for research use only and not for use in diagnostic or therapeutic procedures.

Protein Information

Name	CHRND (HGNC:1965)
Synonyms	ACHRD
Function	After binding acetylcholine, the AChR responds by an extensive change in conformation that affects all subunits and leads to opening of an

ion-conducting channel across the plasma membrane.

Cellular Location

Postsynaptic cell membrane; Multi-pass membrane protein. Cell membrane; Multi-pass membrane protein

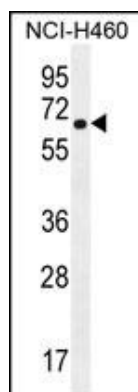
Background

The acetylcholine receptor of muscle has 5 subunits of 4 different types: 2 alpha and 1 each of beta, gamma and delta subunits. After acetylcholine binding, the receptor undergoes an extensive conformation change that affects all subunits and leads to opening of an ion-conducting channel across the plasma membrane.

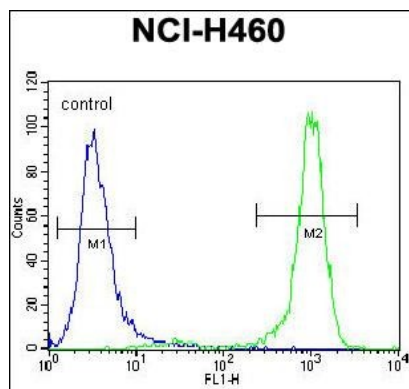
References

Saccone, N.L., et al. Genes Brain Behav. 9(7):741-750(2010)
Joslyn, G., et al. Alcohol. Clin. Exp. Res. 34(5):800-812(2010)
Gratacos, M., et al. Am. J. Med. Genet. B Neuropsychiatr. Genet. 150B (6), 808-816 (2009) :
Saccone, N.L., et al. Am. J. Med. Genet. B Neuropsychiatr. Genet. 150B (4), 453-466 (2009) :
Baranzini, S.E., et al. Hum. Mol. Genet. 18(4):767-778(2009)

Images



CHRND Antibody (Center) (Cat. #AP11657c) western blot analysis in NCI-H460 cell line lysates (35ug/lane). This demonstrates the CHRND antibody detected the CHRND protein (arrow).



CHRND Antibody (Center) (Cat. #AP11657c) flow cytometric analysis of NCI-H460 cells (right histogram) compared to a negative control cell (left histogram). FITC-conjugated goat-anti-rabbit secondary antibodies were used for the analysis.

Please note: All products are 'FOR RESEARCH USE ONLY. NOT FOR USE IN DIAGNOSTIC OR THERAPEUTIC PROCEDURES'.