

# OGN Antibody (C-term)

Affinity Purified Rabbit Polyclonal Antibody (Pab)

Catalog # AP11671b

## Product Information

---

<b>Application</b>	IHC-P, FC, WB, E
<b>Primary Accession</b>	<a href="#">P20774</a>
<b>Other Accession</b>	<a href="#">P19879</a> , <a href="#">NP_148935.1</a> , <a href="#">NP_054776.1</a>
<b>Reactivity</b>	Human, Mouse
<b>Predicted</b>	Bovine
<b>Host</b>	Rabbit
<b>Clonality</b>	Polyclonal
<b>Isotype</b>	Rabbit IgG
<b>Clone Names</b>	RB14506
<b>Calculated MW</b>	33922
<b>Antigen Region</b>	246-276

## Additional Information

---

<b>Gene ID</b>	4969
<b>Other Names</b>	Mimecan, Osteoglycin, Osteoinductive factor, OIF, OGN, OIF, SLRR3A
<b>Target/Specificity</b>	This OGN antibody is generated from rabbits immunized with a KLH conjugated synthetic peptide between 246-276 amino acids from the C-terminal region of human OGN.
<b>Dilution</b>	IHC-P~~1:100~500 FC~~1:10~50 WB~~1:1000 E~~Use at an assay dependent concentration.
<b>Format</b>	Purified polyclonal antibody supplied in PBS with 0.09% (W/V) sodium azide. This antibody is prepared by Saturated Ammonium Sulfate (SAS) precipitation followed by dialysis against PBS.
<b>Storage</b>	Maintain refrigerated at 2-8°C for up to 2 weeks. For long term storage store at -20°C in small aliquots to prevent freeze-thaw cycles.
<b>Precautions</b>	OGN Antibody (C-term) is for research use only and not for use in diagnostic or therapeutic procedures.

## Protein Information

---

<b>Name</b>	OGN
<b>Synonyms</b>	OIF, SLRR3A

<b>Function</b>	Induces bone formation in conjunction with TGF-beta-1 or TGF- beta-2.
<b>Cellular Location</b>	Secreted, extracellular space, extracellular matrix {ECO:0000250 UniProtKB:Q8MJF1}
<b>Tissue Location</b>	Bone.

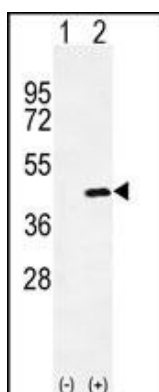
## Background

This gene encodes a protein which induces ectopic bone formation in conjunction with transforming growth factor beta. This protein is a small proteoglycan which contains tandem leucine-rich repeats (LRR). Alternatively spliced transcript variants that encode the same protein have been found for this gene. [provided by RefSeq].

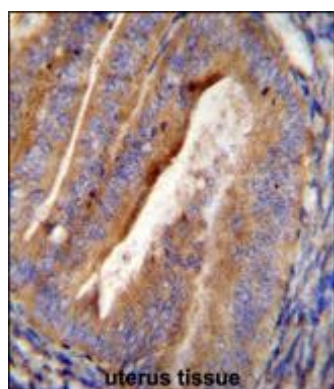
## References

Bailey, S.D., et al. Diabetes Care 33(10):2250-2253(2010)  
 Rose, J.E., et al. Mol. Med. 16 (7-8), 247-253 (2010) :  
 Dimasi, D.P., et al. Mol. Vis. 16, 562-569 (2010) :  
 Yerges, L.M., et al. J. Bone Miner. Res. 24(12):2039-2049(2009)  
 Talmud, P.J., et al. Am. J. Hum. Genet. 85(5):628-642(2009)

## Images

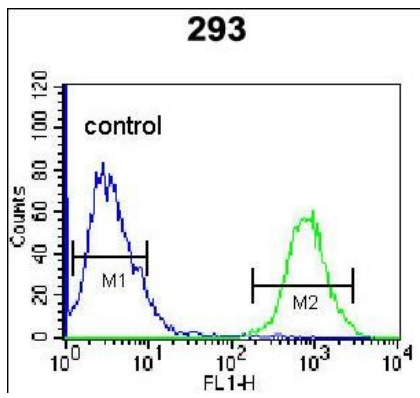


Western blot analysis of OGN (arrow) using rabbit polyclonal OGN Antibody (C-term) (Cat. #AP11671b). 293 cell lysates (2 ug/lane) either nontransfected (Lane 1) or transiently transfected (Lane 2) with the OGN gene.



OGN Antibody (C-term) (Cat. #AP11671b) immunohistochemistry analysis in formalin fixed and paraffin embedded human uterus tissue followed by peroxidase conjugation of the secondary antibody and DAB staining. This data demonstrates the use of OGN Antibody (C-term) for immunohistochemistry. Clinical relevance has not been evaluated.

OGN Antibody (C-term) (Cat. #AP11671b) flow cytometric analysis of 293 cells (right histogram) compared to a negative control cell (left histogram). FITC-conjugated goat-anti-rabbit secondary antibodies were used for the analysis.



Please note: All products are 'FOR RESEARCH USE ONLY. NOT FOR USE IN DIAGNOSTIC OR THERAPEUTIC PROCEDURES'.