

# ITIH1 Antibody (Center)

Affinity Purified Rabbit Polyclonal Antibody (Pab)

Catalog # AP11682c

## Product Information

---

<b>Application</b>	FC, WB, E
<b>Primary Accession</b>	<a href="#">P19827</a>
<b>Other Accession</b>	<a href="#">NP_002206.2</a> , <a href="#">NP_001159908.1</a> , <a href="#">NP_001159906.1</a>
<b>Reactivity</b>	Human
<b>Host</b>	Rabbit
<b>Clonality</b>	Polyclonal
<b>Isotype</b>	Rabbit IgG
<b>Clone Names</b>	RB18296
<b>Calculated MW</b>	101389
<b>Antigen Region</b>	606-635

## Additional Information

---

<b>Gene ID</b>	3697
<b>Other Names</b>	Inter-alpha-trypsin inhibitor heavy chain H1, ITI heavy chain H1, ITI-HC1, Inter-alpha-inhibitor heavy chain 1, Inter-alpha-trypsin inhibitor complex component III, Serum-derived hyaluronan-associated protein, SHAP, ITIH1, IGHEP1
<b>Target/Specificity</b>	This ITIH1 antibody is generated from rabbits immunized with a KLH conjugated synthetic peptide between 606-635 amino acids from the Central region of human ITIH1.
<b>Dilution</b>	FC~~1:10~50 WB~~1:1000 E~~Use at an assay dependent concentration.
<b>Format</b>	Purified polyclonal antibody supplied in PBS with 0.09% (W/V) sodium azide. This antibody is purified through a protein A column, followed by peptide affinity purification.
<b>Storage</b>	Maintain refrigerated at 2-8°C for up to 2 weeks. For long term storage store at -20°C in small aliquots to prevent freeze-thaw cycles.
<b>Precautions</b>	ITIH1 Antibody (Center) is for research use only and not for use in diagnostic or therapeutic procedures.

## Protein Information

---

<b>Name</b>	ITIH1
<b>Synonyms</b>	IGHEP1

**Function** May act as a carrier of hyaluronan in serum or as a binding protein between hyaluronan and other matrix protein, including those on cell surfaces in tissues to regulate the localization, synthesis and degradation of hyaluronan which are essential to cells undergoing biological processes.

**Cellular Location** Secreted.

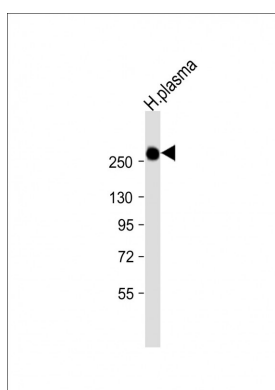
## Background

The protein encoded by this gene is the heavy chain of a serine protease inhibitor that may serve to carry hyaluronan in plasma. This gene is part of a cluster of similar genes on chromosome 3. Multiple transcript variants encoding different isoforms have been found for this gene.

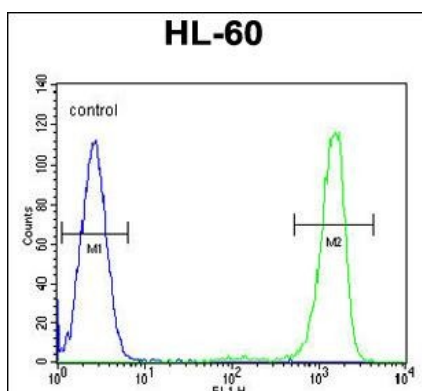
## References

So, H.C., et al. Am. J. Med. Genet. B Neuropsychiatr. Genet. 153B (1), 103-113 (2010) :  
Scott, L.J., et al. Proc. Natl. Acad. Sci. U.S.A. 106(18):7501-7506(2009)  
Hamm, A., et al. BMC Cancer 8, 25 (2008) :  
Scarchilli, L., et al. J. Biol. Chem. 282(41):30161-30170(2007)  
Bunkenborg, J., et al. Proteomics 4(2):454-465(2004)

## Images



Anti-ITIH1 Antibody (Center) at 1:1000 dilution + human plasma lysate Lysates/proteins at 20 µg per lane. Secondary Goat Anti-Rabbit IgG, (H+L), Peroxidase conjugated at 1/10000 dilution. Predicted band size : 101 kDa Blocking/Dilution buffer: 5% NFDM/TBST.



ITIH1 Antibody (Center) (Cat. #AP11682c) flow cytometric analysis of HL-60 cells (right histogram) compared to a negative control cell (left histogram). FITC-conjugated goat-anti-rabbit secondary antibodies were used for the analysis.

Please note: All products are 'FOR RESEARCH USE ONLY. NOT FOR USE IN DIAGNOSTIC OR THERAPEUTIC PROCEDURES'.