

# JAZF1 Antibody (N-term)

Affinity Purified Rabbit Polyclonal Antibody (Pab)

Catalog # AP11693a

## Product Information

---

<b>Application</b>	WB, FC, E
<b>Primary Accession</b>	<a href="#">Q86VZ6</a>
<b>Other Accession</b>	<a href="#">Q80ZQ5</a> , <a href="#">NP_778231.2</a>
<b>Reactivity</b>	Human, Mouse
<b>Host</b>	Rabbit
<b>Clonality</b>	Polyclonal
<b>Isotype</b>	Rabbit IgG
<b>Clone Names</b>	RB19181
<b>Calculated MW</b>	27079
<b>Antigen Region</b>	22-49

## Additional Information

---

<b>Gene ID</b>	221895
<b>Other Names</b>	Juxtaposed with another zinc finger protein 1, TAK1-interacting protein 27, Zinc finger protein 802, JAZF1, TIP27, ZNF802
<b>Target/Specificity</b>	This JAZF1 antibody is generated from rabbits immunized with a KLH conjugated synthetic peptide between 22-49 amino acids from the N-terminal region of human JAZF1.
<b>Dilution</b>	WB~~1:1000 FC~~1:10~50 E~~Use at an assay dependent concentration.
<b>Format</b>	Purified polyclonal antibody supplied in PBS with 0.09% (W/V) sodium azide. This antibody is purified through a protein A column, followed by peptide affinity purification.
<b>Storage</b>	Maintain refrigerated at 2-8°C for up to 2 weeks. For long term storage store at -20°C in small aliquots to prevent freeze-thaw cycles.
<b>Precautions</b>	JAZF1 Antibody (N-term) is for research use only and not for use in diagnostic or therapeutic procedures.

## Protein Information

---

<b>Name</b>	JAZF1 ( <a href="#">HGNC:28917</a> )
<b>Synonyms</b>	TIP27, ZNF802
<b>Function</b>	Acts as a transcriptional corepressor of orphan nuclear receptor NR2C2

(PubMed:[15302918](#)). Inhibits expression of the gluconeogenesis enzyme PCK2 through inhibition of NR2C2 activity (By similarity). Also involved in transcriptional activation of NAMPT by promoting expression of PPARA and PPARG (By similarity). Plays a role in lipid metabolism by suppressing lipogenesis, increasing lipolysis and decreasing lipid accumulation in adipose tissue (By similarity). Plays a role in glucose homeostasis by improving glucose metabolism and insulin sensitivity (By similarity).

**Cellular Location**

Nucleus.

**Tissue Location**

Highest expression in testis with moderate levels in colon, placenta, prostate and ovary and low levels in brain, spleen, liver and small intestine.

## Background

---

This gene encodes a nuclear protein with three C2H2-type zinc fingers, and functions as a transcriptional repressor. Chromosomal aberrations involving this gene are associated with endometrial stromal tumors. Alternatively spliced variants which encode different protein isoforms have been described; however, not all variants have been fully characterized

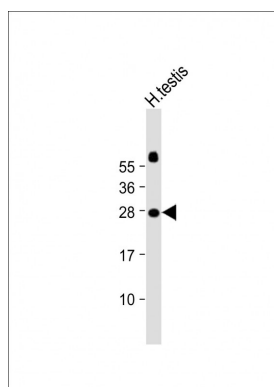
## References

---

Andersson, E.A., et al. Diabetologia 53(9):1908-1916(2010)  
Liu, H., et al. Prostate (2010) In press :  
Voight, B.F., et al. Nat. Genet. 42(7):579-589(2010)  
Gallagher, D.J., et al. Clin. Cancer Res. 16(10):2819-2832(2010)  
Zhao, J., et al. BMC Med. Genet. 11, 96 (2010) :

## Images

---



Anti-JAZF1 Antibody (C-Term) at 1:2000 dilution + Human testis lysate Lysates/proteins at 20 µg per lane. Secondary Goat Anti-Rabbit IgG, (H+L), Peroxidase conjugated at 1/10000 dilution. Predicted band size : 27 kDa  
Blocking/Dilution buffer: 5% NFDM/TBST.

Please note: All products are 'FOR RESEARCH USE ONLY. NOT FOR USE IN DIAGNOSTIC OR THERAPEUTIC PROCEDURES'.