

ATG16L2 Antibody (Center K292)

Affinity Purified Rabbit Polyclonal Antibody (Pab)

Catalog # AP11695c

Product Information

Application	IHC-P, WB, E
Primary Accession	Q8NAA4
Other Accession	Q6KAU8 , NP_203746.1
Reactivity	Human
Predicted	Mouse
Host	Rabbit
Clonality	Polyclonal
Isotype	Rabbit IgG
Clone Names	RB19556
Calculated MW	68998
Antigen Region	277-304

Additional Information

Gene ID	89849
Other Names	Autophagy-related protein 16-2, APG16-like 2, WD repeat-containing protein 80, ATG16L2, WDR80
Target/Specificity	This ATG16L2 antibody is generated from rabbits immunized with a KLH conjugated synthetic peptide between 277-304 amino acids from the Central region of human ATG16L2.
Dilution	IHC-P~~1:100~500 WB~~1:1000 E~~Use at an assay dependent concentration.
Format	Purified polyclonal antibody supplied in PBS with 0.09% (W/V) sodium azide. This antibody is purified through a protein A column, followed by peptide affinity purification.
Storage	Maintain refrigerated at 2-8°C for up to 2 weeks. For long term storage store at -20°C in small aliquots to prevent freeze-thaw cycles.
Precautions	ATG16L2 Antibody (Center K292) is for research use only and not for use in diagnostic or therapeutic procedures.

Protein Information

Name	ATG16L2
Synonyms	WDR80

Function	May play a role in regulating epithelial homeostasis in an ATG16L1-dependent manner.
Cellular Location	Cytoplasm, cytosol {ECO:0000250 UniProtKB:Q6KAU8}. Note=Also localizes to discrete punctae along the ciliary axoneme. {ECO:0000250 UniProtKB:Q6KAU8}

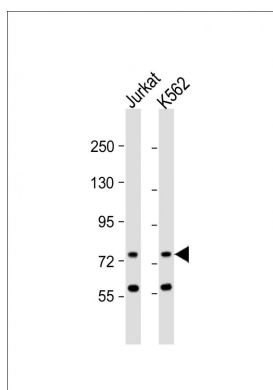
Background

ATG16L2 may play a role in autophagy (By similarity).

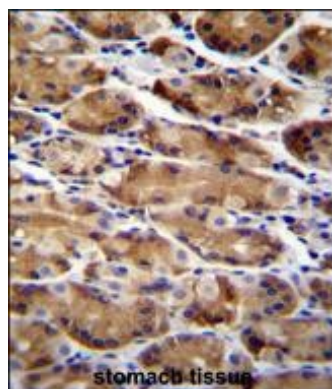
References

Hattori, A., et al. DNA Res. 7(6):357-366(2000)

Images



All lanes : Anti-ATG16L2 Antibody (Center K292) at 1:1000 dilution Lane 1: Jurkat whole cell lysate Lane 2: K562 whole cell lysate Lysates/proteins at 20 µg per lane. Secondary Goat Anti-Rabbit IgG, (H+L), Peroxidase conjugated at 1/10000 dilution. Predicted band size : 69 kDa Blocking/Dilution buffer: 5% NFDM/TBST.



ATG16L2 Antibody (Center K292) (Cat. #AP11695c) immunohistochemistry analysis in formalin fixed and paraffin embedded human stomach tissue followed by peroxidase conjugation of the secondary antibody and DAB staining. This data demonstrates the use of ATG16L2 Antibody (Center K292) for immunohistochemistry. Clinical relevance has not been evaluated.

Citations

- [Three-dimensional tumor cell growth stimulates autophagic flux and recapitulates chemotherapy resistance.](#)

Please note: All products are 'FOR RESEARCH USE ONLY. NOT FOR USE IN DIAGNOSTIC OR THERAPEUTIC PROCEDURES'.