

TMEM100 Antibody (C-term)

Affinity Purified Rabbit Polyclonal Antibody (Pab)

Catalog # AP11713b

Product Information

Application	IHC-P, FC, WB, E
Primary Accession	Q9NV29
Other Accession	Q2KIC8 , NP_001093110.1 , NP_060756.2
Reactivity	Human, Rat, Mouse
Predicted	Bovine
Host	Rabbit
Clonality	Polyclonal
Isotype	Rabbit IgG
Clone Names	RB28973
Calculated MW	14386
Antigen Region	93-122

Additional Information

Gene ID	55273
Other Names	Transmembrane protein 100, TMEM100
Target/Specificity	This TMEM100 antibody is generated from rabbits immunized with a KLH conjugated synthetic peptide between 93-122 amino acids from the C-terminal region of human TMEM100.
Dilution	IHC-P~~1:100~500 FC~~1:10~50 WB~~1:1000 E~~Use at an assay dependent concentration.
Format	Purified polyclonal antibody supplied in PBS with 0.09% (W/V) sodium azide. This antibody is purified through a protein A column, followed by peptide affinity purification.
Storage	Maintain refrigerated at 2-8°C for up to 2 weeks. For long term storage store at -20°C in small aliquots to prevent freeze-thaw cycles.
Precautions	TMEM100 Antibody (C-term) is for research use only and not for use in diagnostic or therapeutic procedures.

Protein Information

Name	TMEM100
Function	Plays a role during embryonic arterial endothelium differentiation and vascular morphogenesis through the ACVRL1 receptor- dependent signaling

pathway upon stimulation by bone morphogenetic proteins, such as GDF2/BMP9 and BMP10. Involved in the regulation of nociception, acting as a modulator of the interaction between TRPA1 and TRPV1, two molecular sensors and mediators of pain signals in dorsal root ganglia (DRG) neurons. Mechanistically, it weakens their interaction, thereby releasing the inhibition of TRPA1 by TRPV1 and increasing the single-channel open probability of the TRPA1-TRPV1 complex.

Cellular Location

Cell membrane; Multi-pass membrane protein. Membrane; Multi-pass membrane protein Perikaryon. Cytoplasm, perinuclear region. Endoplasmic reticulum Note=Colocalized with HSPA5 in the endoplasmic reticulum (ER). Enriched in ER microsome. Colocalized with BMP4 in neural cell bodies and neural fibers of the enteric nervous system

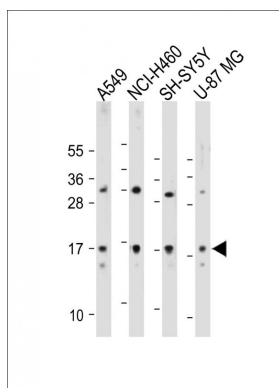
Tissue Location

Expressed in neurons of the myenteric and submucosal plexuses in the gastric body, jejunum and proximal colon Expressed in arterial endothelial cells and neurons of the central nervous system and peripheral nervous system. Expressed in umbilical artery endothelial cells (at protein level)

References

de Krom, M., et al. Biol. Psychiatry 65(7):625-630(2009)
Wang, A.G., et al. Biochem. Biophys. Res. Commun. 345(3):1022-1032(2006)

Images



All lanes : Anti-TMEM100 Antibody (C-term) at 1:2000 dilution Lane 1: A549 whole cell lysate Lane 2: NCI-H460 whole cell lysate Lane 3: SH-SY5Y whole cell lysate Lane 4: U-87 MG whole cell lysate Lysates/proteins at 20 µg per lane. Secondary Goat Anti-Rabbit IgG, (H+L), Peroxidase conjugated at 1/10000 dilution. Predicted band size : 14 kDa Blocking/Dilution buffer: 5% NFDM/TBST.

Please note: All products are 'FOR RESEARCH USE ONLY. NOT FOR USE IN DIAGNOSTIC OR THERAPEUTIC PROCEDURES'.