

BRUNOL6 Antibody (N-term)

Affinity Purified Rabbit Polyclonal Antibody (Pab)

Catalog # AP11714a

Product Information

Application	IHC-P, WB, E
Primary Accession	Q96J87
Other Accession	Q7TN33 , NP_001166155.1 , NP_443072.3
Reactivity	Human, Mouse
Host	Rabbit
Clonality	Polyclonal
Isotype	Rabbit IgG
Clone Names	RB28976
Calculated MW	50477
Antigen Region	46-74

Additional Information

Gene ID	60677
Other Names	CUGBP Elav-like family member 6, CELF-6, Bruno-like protein 6, CUG-BP- and ETR-3-like factor 6, RNA-binding protein BRUNOL-6, CELF6, BRUNOL6
Target/Specificity	This BRUNOL6 antibody is generated from rabbits immunized with a KLH conjugated synthetic peptide between 46-74 amino acids from the N-terminal region of human BRUNOL6.
Dilution	IHC-P~~1:100~500 WB~~1:1000 E~~Use at an assay dependent concentration.
Format	Purified polyclonal antibody supplied in PBS with 0.09% (W/V) sodium azide. This antibody is purified through a protein A column, followed by peptide affinity purification.
Storage	Maintain refrigerated at 2-8°C for up to 2 weeks. For long term storage store at -20°C in small aliquots to prevent freeze-thaw cycles.
Precautions	BRUNOL6 Antibody (N-term) is for research use only and not for use in diagnostic or therapeutic procedures.

Protein Information

Name	CELF6
Synonyms	BRUNOL6
Function	RNA-binding protein implicated in the regulation of pre-mRNA alternative

splicing. Mediates exon inclusion and/or exclusion in pre- mRNA that are subject to tissue-specific and developmentally regulated alternative splicing. Specifically activates exon 5 inclusion of TNNT2 in a muscle-specific splicing enhancer (MSE)-dependent manner. Promotes also exon exclusion of INSR pre-mRNA.

Cellular Location

Nucleus. Cytoplasm.

Tissue Location

Expressed mainly in kidney, brain and testis and present in other tissues albeit at lower levels. Also expressed in fetal kidney.

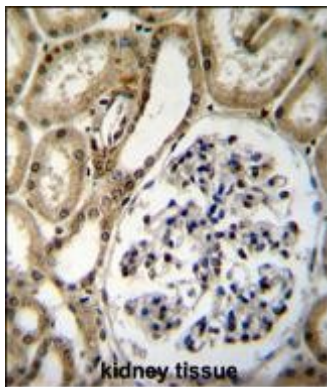
Background

Members of the CELF/BRUNOL protein family contain two N-terminal RNA recognition motif (RRM) domains, one C-terminal RRM domain, and a divergent segment of 160-230 aa between the second and third RRM domains. Members of this protein family regulate pre-mRNA alternative splicing and may also be involved in mRNA editing, and translation. Multiple alternatively spliced transcript variants encoding different isoforms have been identified in this gene.

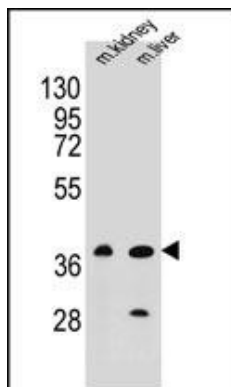
References

Ladd, A.N., et al. J. Biol. Chem. 279(17):17756-17764(2004)
Wistow, G., et al. Mol. Vis. 8, 205-220 (2002) :
Good, P.J., et al. J. Biol. Chem. 275(37):28583-28592(2000)

Images



BRUNOL6 Antibody (N-term) (Cat. #AP11714a) immunohistochemistry analysis in formalin fixed and paraffin embedded human kidney tissue followed by peroxidase conjugation of the secondary antibody and DAB staining. This data demonstrates the use of BRUNOL6 Antibody (N-term) for immunohistochemistry. Clinical relevance has not been evaluated.



BRUNOL6 Antibody (N-term) (Cat. #AP11714a) western blot analysis in mouse kidney, liver tissue lysates (35ug/lane). This demonstrates the BRUNOL6 antibody detected the BRUNOL6 protein (arrow).

Please note: All products are 'FOR RESEARCH USE ONLY. NOT FOR USE IN DIAGNOSTIC OR THERAPEUTIC PROCEDURES'.