

SMTNL2 Antibody (N-term)

Affinity Purified Rabbit Polyclonal Antibody (Pab)

Catalog # AP11716a

Product Information

Application	WB, E
Primary Accession	Q2TAL5
Other Accession	NP_001108446.1 , NP_940903.2
Reactivity	Mouse
Host	Rabbit
Clonality	Polyclonal
Isotype	Rabbit IgG
Clone Names	RB29222
Calculated MW	50196
Antigen Region	21-48

Additional Information

Gene ID	342527
Other Names	Smoothelin-like protein 2, SMTNL2
Target/Specificity	This SMTNL2 antibody is generated from rabbits immunized with a KLH conjugated synthetic peptide between 21-48 amino acids from the N-terminal region of human SMTNL2.
Dilution	WB~~1:1000 E~~Use at an assay dependent concentration.
Format	Purified polyclonal antibody supplied in PBS with 0.09% (W/V) sodium azide. This antibody is purified through a protein A column, followed by peptide affinity purification.
Storage	Maintain refrigerated at 2-8°C for up to 2 weeks. For long term storage store at -20°C in small aliquots to prevent freeze-thaw cycles.
Precautions	SMTNL2 Antibody (N-term) is for research use only and not for use in diagnostic or therapeutic procedures.

Protein Information

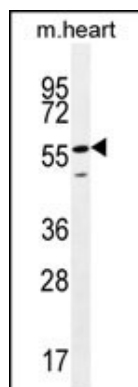
Name	SMTNL2
------	--------

References

Kimura, K., et al. Genome Res. 16(1):55-65(2006)

Strausberg, R.L., et al. Proc. Natl. Acad. Sci. U.S.A. 99(26):16899-16903(2002)

Images



SMTNL2 Antibody (N-term) (Cat. #AP11716a) western blot analysis in mouse heart tissue lysates (35ug/lane). This demonstrates the SMTNL2 antibody detected the SMTNL2 protein (arrow).

Please note: All products are 'FOR RESEARCH USE ONLY. NOT FOR USE IN DIAGNOSTIC OR THERAPEUTIC PROCEDURES'.