

ZNF286B Antibody (N-term)

Affinity Purified Rabbit Polyclonal Antibody (Pab)

Catalog # AP11723a

Product Information

Application	WB, E
Primary Accession	P0CG31
Other Accession	NP_001138517.1
Reactivity	Human
Host	Rabbit
Clonality	Polyclonal
Isotype	Rabbit IgG
Clone Names	RB29373
Calculated MW	59572
Antigen Region	96-124

Additional Information

Other Names	Putative zinc finger protein 286B, ZNF286B, ZNF286C, ZNF286L
Target/Specificity	This ZNF286B antibody is generated from rabbits immunized with a KLH conjugated synthetic peptide between 96-124 amino acids from the N-terminal region of human ZNF286B.
Dilution	WB~~1:1000 E~~Use at an assay dependent concentration.
Format	Purified polyclonal antibody supplied in PBS with 0.09% (W/V) sodium azide. This antibody is purified through a protein A column, followed by peptide affinity purification.
Storage	Maintain refrigerated at 2-8°C for up to 2 weeks. For long term storage store at -20°C in small aliquots to prevent freeze-thaw cycles.
Precautions	ZNF286B Antibody (N-term) is for research use only and not for use in diagnostic or therapeutic procedures.

Protein Information

Name	ZNF286B
Synonyms	ZNF286C, ZNF286L
Function	May be involved in transcriptional regulation.
Cellular Location	Nucleus.

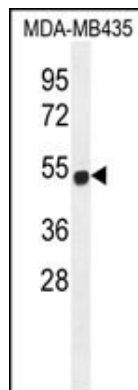
Background

ZNF286B may be involved in transcriptional regulation (By similarity).

References

Zody, M.C., et al. Nature 440(7087):1045-1049(2006)

Images



ZNF286B Antibody (N-term) (Cat. #AP11723a) western blot analysis in MDA-MB435 cell line lysates (35ug/lane). This demonstrates the ZNF286B antibody detected the ZNF286B protein (arrow).

Please note: All products are 'FOR RESEARCH USE ONLY. NOT FOR USE IN DIAGNOSTIC OR THERAPEUTIC PROCEDURES'.