

UNQ9391 Antibody (C-term)

Affinity Purified Rabbit Polyclonal Antibody (Pab)

Catalog # AP11740b

Product Information

| | |
|-------------------|-----------------------------|
| Application | WB, FC, E |
| Primary Accession | Q6UWB4 |
| Other Accession | NP_940866.2 |
| Reactivity | Human |
| Host | Rabbit |
| Clonality | Polyclonal |
| Isotype | Rabbit IgG |
| Clone Names | RB29621 |
| Calculated MW | 38856 |
| Antigen Region | 289-318 |

Additional Information

| | |
|--------------------|--|
| Gene ID | 203074 |
| Other Names | Serine protease 55, 3421-, Testis serine protease 1, T-SP1, PRSS55, TSP1 |
| Target/Specificity | This UNQ9391 antibody is generated from rabbits immunized with a KLH conjugated synthetic peptide between 289-318 amino acids from the C-terminal region of human UNQ9391. |
| Dilution | WB~~1:1000 FC~~1:10~50 E~~Use at an assay dependent concentration. |
| Format | Purified polyclonal antibody supplied in PBS with 0.09% (W/V) sodium azide. This antibody is purified through a protein A column, followed by peptide affinity purification. |
| Storage | Maintain refrigerated at 2-8°C for up to 2 weeks. For long term storage store at -20°C in small aliquots to prevent freeze-thaw cycles. |
| Precautions | UNQ9391 Antibody (C-term) is for research use only and not for use in diagnostic or therapeutic procedures. |

Protein Information

| | |
|----------|---|
| Name | PRSS55 |
| Synonyms | TSP1 {ECO:0000303 PubMed:18844450} |
| Function | Probable serine protease, which plays a crucial role in the fertility of male mice including sperm migration and sperm-egg interaction. |

Cellular Location

[Isoform 1]: Cell membrane; Lipid-anchor, GPI-anchor {ECO:0000250|UniProtKB:Q14BX2}. Cytoplasm, cytosol. Note=Mainly found in the membrane part of the cells and only in small amounts in the cytosol

Tissue Location

Only detected in testis. Expressed in spermatogonia, spermatocytes, spermatids, Leydig and Sertoli cells Expressed in prostate cancer and ovarian cancer (at protein level)

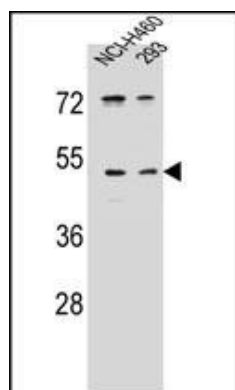
Background

This gene encodes a member of a group of membrane-anchored chymotrypsin (S1)-like serine proteases. The encoded protein is primarily expressed in the Leydig and Sertoli cells of the testis and may be involved in male fertility. Alternate splicing results in multiple transcript variants.

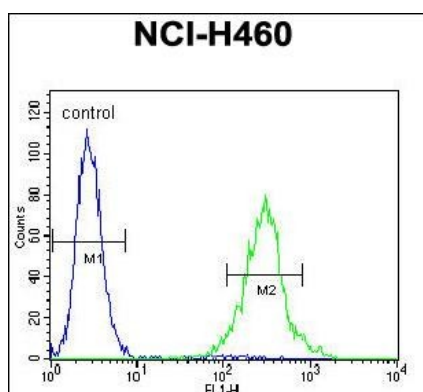
References

Neth, P., et al. Biol. Chem. 389(12):1495-1504(2008)

Images



UNQ9391 Antibody (C-term) (Cat. #AP11740b) western blot analysis in NCI-H460,293 cell line lysates (35ug/lane). This demonstrates the UNQ9391 antibody detected the UNQ9391 protein (arrow).



UNQ9391 Antibody (C-term) (Cat. #AP11740b) flow cytometric analysis of NCI-H460 cells (right histogram) compared to a negative control cell (left histogram). FITC-conjugated goat-anti-rabbit secondary antibodies were used for the analysis.

Please note: All products are 'FOR RESEARCH USE ONLY. NOT FOR USE IN DIAGNOSTIC OR THERAPEUTIC PROCEDURES'.