

# CCDC36 Antibody (C-term)

Affinity Purified Rabbit Polyclonal Antibody (Pab)

Catalog # AP11750b

## Product Information

---

Application	IHC-P, IF, WB, E
Primary Accession	<a href="#">Q8IYA8</a>
Other Accession	<a href="#">NP_001128669.1</a> , <a href="#">NP_835467.2</a>
Reactivity	Human
Host	Rabbit
Clonality	Polyclonal
Isotype	Rabbit IgG
Clone Names	RB29727
Calculated MW	66343
Antigen Region	422-450

## Additional Information

---

Gene ID	339834
Other Names	Coiled-coil domain-containing protein 36, Cancer/testis antigen 74, CT74, CCDC36
Target/Specificity	This CCDC36 antibody is generated from rabbits immunized with a KLH conjugated synthetic peptide between 422-450 amino acids from the C-terminal region of human CCDC36.
Dilution	IHC-P~~1:100~500 IF~~1:10~50 WB~~1:1000 E~~Use at an assay dependent concentration.
Format	Purified polyclonal antibody supplied in PBS with 0.09% (W/V) sodium azide. This antibody is purified through a protein A column, followed by peptide affinity purification.
Storage	Maintain refrigerated at 2-8°C for up to 2 weeks. For long term storage store at -20°C in small aliquots to prevent freeze-thaw cycles.
Precautions	CCDC36 Antibody (C-term) is for research use only and not for use in diagnostic or therapeutic procedures.

## Protein Information

---

Name	IHO1 {ECO:0000303 PubMed:27723721, ECO:0000312 HGNC:HGNC:27945}
Function	Required for DNA double-strand breaks (DSBs) formation in unsynapsed regions during meiotic recombination. Probably acts by forming a complex

with MEI4 and REC114, which activates DSBs formation in unsynapsed regions, an essential step to ensure completion of synapsis. Not required for HORMAD1 functions in pairing-independent synaptonemal complex formation, ATR recruitment to unsynapsed axes, meiotic silencing of unsynapsed chromatin (MSUC) or meiotic surveillance.

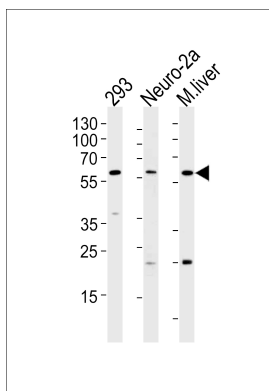
### Cellular Location

Chromosome {ECO:0000250|UniProtKB:Q6PDM4}. Note=Specifically localizes to unsynapsed chromosomal regions during meiosis.  
{ECO:0000250|UniProtKB:Q6PDM4}

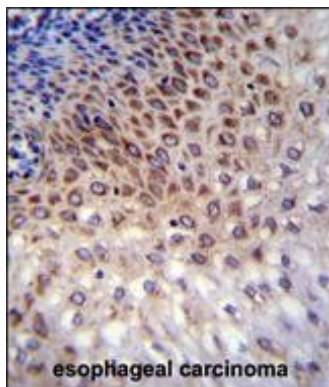
## References

Strausberg, R.L., et al. Proc. Natl. Acad. Sci. U.S.A. 99(26):16899-16903(2002)

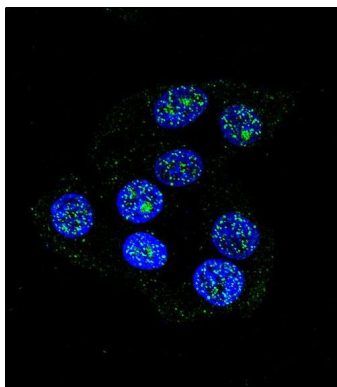
## Images



Western blot analysis of lysates from 293, Neuro-2a cell line and mouse liver tissue (from left to right), using CCDC36 Antibody (C-term)(Cat. #AP11750b). AP11750b was diluted at 1:1000 at each lane. A goat anti-rabbit IgG H&L(HRP) at 1:5000 dilution was used as the secondary antibody. Lysates at 35ug per lane.



CCDC36 Antibody (C-term) (Cat. #AP11750b) immunohistochemistry analysis in formalin fixed and paraffin embedded human esophageal carcinoma followed by peroxidase conjugation of the secondary antibody and DAB staining. This data demonstrates the use of CCDC36 Antibody (C-term) for immunohistochemistry. Clinical relevance has not been evaluated.



Confocal immunofluorescent analysis of CCDC36 Antibody (C-term)(Cat.#AP11750b) with 293 cell followed by Alexa Fluor 488-conjugated goat anti-rabbit IgG (green). DAPI was used to stain the cell nuclear (blue).