

LRRC6 Antibody (Center)

Affinity Purified Rabbit Polyclonal Antibody (Pab)

Catalog # AP11754c

Product Information

Application	WB, FC, E
Primary Accession	Q86X45
Other Accession	Q4R3F0 , NP_036604.2
Reactivity	Human
Predicted	Monkey
Host	Rabbit
Clonality	Polyclonal
Isotype	Rabbit IgG
Clone Names	RB29853
Calculated MW	54255
Antigen Region	179-207

Additional Information

Gene ID	23639
Other Names	Protein tilB homolog, Leucine-rich repeat-containing protein 6, Leucine-rich testis-specific protein, Testis-specific leucine-rich repeat protein, LRRC6, LRTP, TSLRP
Target/Specificity	This LRRC6 antibody is generated from rabbits immunized with a KLH conjugated synthetic peptide between 179-207 amino acids from the Central region of human LRRC6.
Dilution	WB~~1:1000 FC~~1:10~50 E~~Use at an assay dependent concentration.
Format	Purified polyclonal antibody supplied in PBS with 0.09% (W/V) sodium azide. This antibody is purified through a protein A column, followed by peptide affinity purification.
Storage	Maintain refrigerated at 2-8°C for up to 2 weeks. For long term storage store at -20°C in small aliquots to prevent freeze-thaw cycles.
Precautions	LRRC6 Antibody (Center) is for research use only and not for use in diagnostic or therapeutic procedures.

Protein Information

Name	DNAAF11 (HGNC:16725)
Function	Involved in dynein arm assembly, is important for expression and

transporting outer dynein arm (ODA) proteins from the cytoplasm to the cilia (PubMed:[23122589](#), PubMed:[23527195](#), PubMed:[33403504](#)). Acts as a crucial component in the formation and motility of spermatozoal flagella (PubMed:[33403504](#)).

Cellular Location

Cytoplasm. Cell projection, cilium. Dynein axonemal particle {ECO:0000250|UniProtKB:A0A1L8G016}. Cell projection, cilium, flagellum

Tissue Location

Expressed predominantly in testis and in nasal epithelial cells.

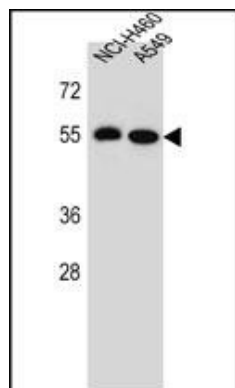
Background

LRRC6 may be involved in spermatocytogenesis or prophase of meiosis (By similarity).

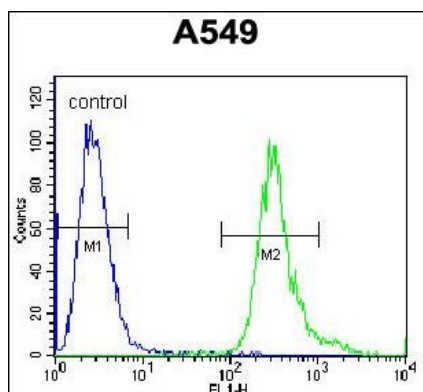
References

Gerhard, D.S., et al. Genome Res. 14 (10B), 2121-2127 (2004) :

Images



LRRC6 Antibody (Center) (Cat. #AP11754c) western blot analysis in NCI-H460,A549 cell line lysates (35ug/lane).This demonstrates the LRRC6 antibody detected the LRRC6 protein (arrow).



LRRC6 Antibody (Center) (Cat. #AP11754c) flow cytometric analysis of A549 cells (right histogram) compared to a negative control cell (left histogram).FITC-conjugated goat-anti-rabbit secondary antibodies were used for the analysis.

Please note: All products are 'FOR RESEARCH USE ONLY. NOT FOR USE IN DIAGNOSTIC OR THERAPEUTIC PROCEDURES'.