

CCDC110 Antibody (C-term)

Affinity Purified Rabbit Polyclonal Antibody (Pab)

Catalog # AP11757b

Product Information

Application	WB, IHC-P, E
Primary Accession	Q8TBZ0
Other Accession	NP_001138883.1 , NP_689988.1
Reactivity	Mouse
Host	Rabbit
Clonality	Polyclonal
Isotype	Rabbit IgG
Clone Names	RB30144
Calculated MW	96726
Antigen Region	777-806

Additional Information

Gene ID	256309
Other Names	Coiled-coil domain-containing protein 110, Cancer/testis antigen 52, CT52, Cancer/testis antigen KM-HN-1, CCDC110, KMHN1
Target/Specificity	This CCDC110 antibody is generated from rabbits immunized with a KLH conjugated synthetic peptide between 777-806 amino acids from the C-terminal region of human CCDC110.
Dilution	WB~~1:1000 IHC-P~~1:100~500 E~~Use at an assay dependent concentration.
Format	Purified polyclonal antibody supplied in PBS with 0.05% (V/V) Proclin 300. This antibody is purified through a protein A column, followed by peptide affinity purification.
Storage	Maintain refrigerated at 2-8°C for up to 2 weeks. For long term storage store at -20°C in small aliquots to prevent freeze-thaw cycles.
Precautions	CCDC110 Antibody (C-term) is for research use only and not for use in diagnostic or therapeutic procedures.

Protein Information

Name	CCDC110
Synonyms	KMHN1
Cellular Location	Nucleus.

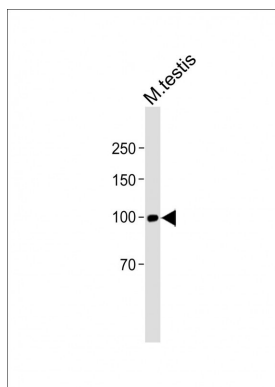
Tissue Location

Expressed specifically in testis. Also expressed in tumors of different origins.

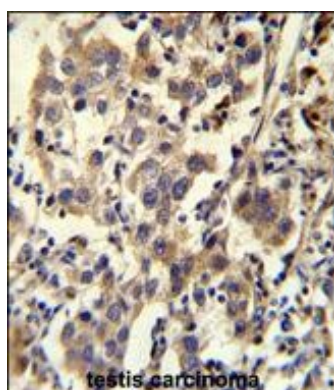
References

Monji, M., et al. Clin. Cancer Res. 10 (18 PT 1), 6047-6057 (2004) :

Images



All lanes: Anti-CCDC110 Antibody (C-term) at 1:2000 dilution + Mouse testis lysate Lysates/proteins at 20 µg per lane. Secondary: Goat Anti-Rabbit IgG, (H+L), Peroxidase conjugated (ASP1615) at 1/15000 dilution. Observed band size: 97 KDa Blocking/Dilution buffer: 5% NFDM/TBST.



CCDC110 Antibody (C-term) (Cat. #AP11757b) immunohistochemistry analysis in formalin fixed and paraffin embedded human testis carcinoma followed by peroxidase conjugation of the secondary antibody and DAB staining. This data demonstrates the use of CCDC110 Antibody (C-term) for immunohistochemistry. Clinical relevance has not been evaluated.

Please note: All products are 'FOR RESEARCH USE ONLY. NOT FOR USE IN DIAGNOSTIC OR THERAPEUTIC PROCEDURES'.