

TAS1R2 Antibody (C-term)

Affinity Purified Rabbit Polyclonal Antibody (Pab)

Catalog # AP11760b

Product Information

Application	WB, E
Primary Accession	Q8TE23
Other Accession	NP_689418.2
Reactivity	Human
Host	Rabbit
Clonality	Polyclonal
Isotype	Rabbit IgG
Clone Names	RB31400
Calculated MW	95183
Antigen Region	691-718

Additional Information

Gene ID	80834
Other Names	Taste receptor type 1 member 2, G-protein coupled receptor 71, Sweet taste receptor T1R2, TAS1R2, GPR71, T1R2, TR2
Target/Specificity	This TAS1R2 antibody is generated from rabbits immunized with a KLH conjugated synthetic peptide between 691-718 amino acids from the C-terminal region of human TAS1R2.
Dilution	WB~~1:1000 E~~Use at an assay dependent concentration.
Format	Purified polyclonal antibody supplied in PBS with 0.09% (W/V) sodium azide. This antibody is purified through a protein A column, followed by peptide affinity purification.
Storage	Maintain refrigerated at 2-8°C for up to 2 weeks. For long term storage store at -20°C in small aliquots to prevent freeze-thaw cycles.
Precautions	TAS1R2 Antibody (C-term) is for research use only and not for use in diagnostic or therapeutic procedures.

Protein Information

Name	TAS1R2
Synonyms	GPR71, T1R2, TR2
Function	Putative taste receptor. TAS1R2/TAS1R3 recognizes diverse natural and

synthetic sweeteners.

Cellular Location

Cell membrane; Multi-pass membrane protein.

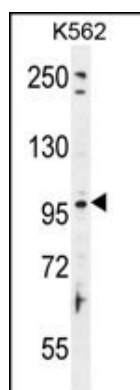
Background

Putative taste receptor. TAS1R2/TAS1R3 recognizes diverse natural and synthetic sweeteners.

References

Wendell, S., et al. J. Dent. Res. 89(11):1198-1202(2010)
Pinheiro, A.P., et al. Am. J. Med. Genet. B Neuropsychiatr. Genet. 153B (5), 1070-1080 (2010) :
Assadi-Porter, F.M., et al. J. Mol. Biol. 398(4):584-599(2010)
Chandrashekar, J., et al. Nature 444(7117):288-294(2006)
Galindo-Cuspinera, V., et al. Nature 441(7091):354-357(2006)

Images



TAS1R2 Antibody (C-term) (Cat. #AP11760b) western blot analysis in K562 cell line lysates (35ug/lane). This demonstrates the TAS1R2 antibody detected the TAS1R2 protein (arrow).

Please note: All products are 'FOR RESEARCH USE ONLY. NOT FOR USE IN DIAGNOSTIC OR THERAPEUTIC PROCEDURES'.