

PTMA Antibody (N-term)

Affinity Purified Rabbit Polyclonal Antibody (Pab)

Catalog # AP11770a

Product Information

Application	WB, IHC-P, FC, E
Primary Accession	P06454
Other Accession	P06302 , P26350 , P01252 , NP_001092755.1 , NP_002814.3
Reactivity	Human
Predicted	Bovine, Mouse, Rat
Host	Rabbit
Clonality	Polyclonal
Isotype	Rabbit IgG
Clone Names	RB17222
Calculated MW	12203
Antigen Region	1-31

Additional Information

Gene ID	5757
Other Names	Prothymosin alpha, Prothymosin alpha, N-terminally processed, Thymosin alpha-1, PTMA, TMSA
Target/Specificity	This PTMA antibody is generated from rabbits immunized with a KLH conjugated synthetic peptide between 1-31 amino acids from the N-terminal region of human PTMA.
Dilution	WB~~1:1000 IHC-P~~1:100~500 FC~~1:10~50 E~~Use at an assay dependent concentration.
Format	Purified polyclonal antibody supplied in PBS with 0.05% (V/V) Proclin 300. This antibody is prepared by Saturated Ammonium Sulfate (SAS) precipitation followed by dialysis against PBS.
Storage	Maintain refrigerated at 2-8°C for up to 2 weeks. For long term storage store at -20°C in small aliquots to prevent freeze-thaw cycles.
Precautions	PTMA Antibody (N-term) is for research use only and not for use in diagnostic or therapeutic procedures.

Protein Information

Name	PTMA
Synonyms	TMSA

Function Prothymosin alpha may mediate immune function by conferring resistance to certain opportunistic infections.

Cellular Location Nucleus.

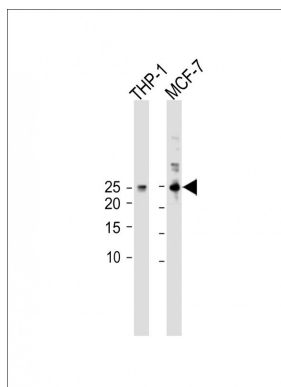
Background

Prothymosin alpha may mediate immune function by conferring resistance to certain opportunistic infections.

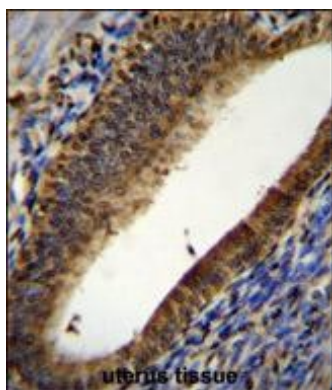
References

Qi, X., et al. Biochemistry 49(9):1923-1930(2010)
Skopeliti, M., et al. Mol. Immunol. 46(5):784-792(2009)
Pawlikowski, M., et al. Folia Histochem. Cytobiol. 47(4):559-562(2009)
Zakharova, N.I., et al. Mol. Biol. (Mosk.) 42(4):673-684(2008)
Gudbjartsson, D.F., et al. Nat. Genet. 40(5):609-615(2008)

Images

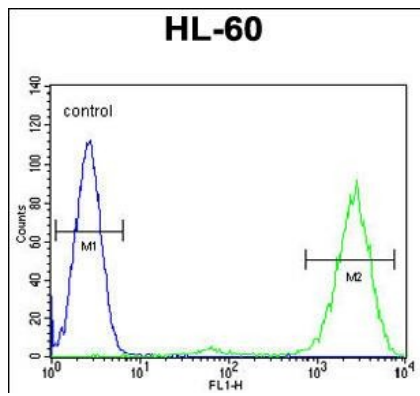


All lanes: Anti-PTMA Antibody (N-term) at 1:1000 dilution
Lane 1: THP-1 whole cell lysate Lane 2: MCF-7 whole cell lysate
Lysates/proteins at 20 µg per lane. Secondary Goat Anti-Rabbit IgG, (H+L), Peroxidase conjugated (ASP1615) E42at 1/15000 dilution. Observed band size: KDa
Blocking/Dilution buffer: 5% NFDM/TBST.



PTMA Antibody (N-term) (Cat. #AP11770a) immunohistochemistry analysis in formalin fixed and paraffin embedded human uterus tissue followed by peroxidase conjugation of the secondary antibody and DAB staining. This data demonstrates the use of PTMA Antibody (N-term) for immunohistochemistry. Clinical relevance has not been evaluated.

PTMA Antibody (N-term) (Cat. #AP11770a) flow cytometric analysis of HL-60 cells (right histogram) compared to a negative control cell (left histogram). FITC-conjugated goat-anti-rabbit secondary antibodies were used for the analysis.



Please note: All products are 'FOR RESEARCH USE ONLY. NOT FOR USE IN DIAGNOSTIC OR THERAPEUTIC PROCEDURES'.