

PLEKHA4 Antibody (N-term)

Affinity Purified Rabbit Polyclonal Antibody (Pab)

Catalog # AP11773a

Product Information

Application	WB, IHC-P, FC, E
Primary Accession	Q9H4M7
Other Accession	NP_065955.2 , NP_001154826.1
Reactivity	Human
Host	Rabbit
Clonality	Polyclonal
Isotype	Rabbit IgG
Clone Names	RB18470
Calculated MW	85401
Antigen Region	21-50

Additional Information

Gene ID	57664
Other Names	Pleckstrin homology domain-containing family A member 4, PH domain-containing family A member 4, Phosphoinositol 3-phosphate-binding protein 1, PEPP-1, PLEKHA4, PEPP1
Target/Specificity	This PLEKHA4 antibody is generated from rabbits immunized with a KLH conjugated synthetic peptide between 21-50 amino acids from the N-terminal region of human PLEKHA4.
Dilution	WB~~1:1000 IHC-P~~1:100~500 FC~~1:10~50 E~~Use at an assay dependent concentration.
Format	Purified polyclonal antibody supplied in PBS with 0.09% (W/V) sodium azide. This antibody is purified through a protein A column, followed by peptide affinity purification.
Storage	Maintain refrigerated at 2-8°C for up to 2 weeks. For long term storage store at -20°C in small aliquots to prevent freeze-thaw cycles.
Precautions	PLEKHA4 Antibody (N-term) is for research use only and not for use in diagnostic or therapeutic procedures.

Protein Information

Name	PLEKHA4
Synonyms	PEPP1

Function	Binds specifically to phosphatidylinositol 3-phosphate (PtdIns3P), but not to other phosphoinositides.
Cellular Location	Cytoplasm. Membrane; Peripheral membrane protein
Tissue Location	Highly expressed in melanoma. Detected at low levels in heart, skeletal muscle, kidney, liver and small intestine

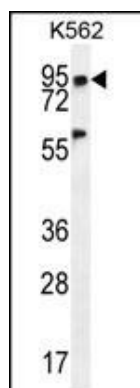
Background

PLEKHA4 binds specifically to phosphatidylinositol-3-phosphate (PtdIns3P), but not to other phosphoinositides.

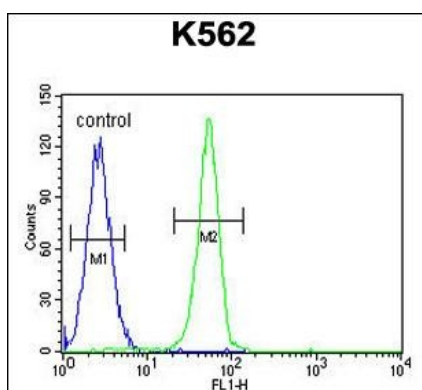
References

Stelzl, U., et al. Cell 122(6):957-968(2005)
Dowler, S., et al. Biochem. J. 351 (PT 1), 19-31 (2000) :

Images

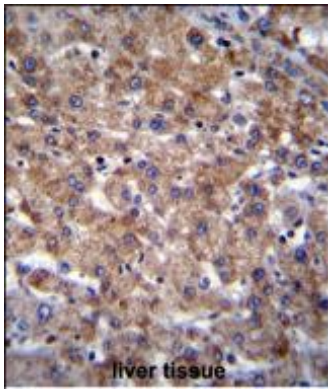


PLEKHA4 Antibody (N-term) (Cat. #AP11773a) western blot analysis in K562 cell line lysates (35ug/lane). This demonstrates the PLEKHA4 antibody detected the PLEKHA4 protein (arrow).



PLEKHA4 Antibody (N-term) (Cat. #AP11773a) flow cytometric analysis of K562 cells (right histogram) compared to a negative control cell (left histogram). FITC-conjugated goat-anti-rabbit secondary antibodies were used for the analysis.

PLEKHA4 Antibody (N-term) (Cat. #AP11773a) immunohistochemistry analysis in formalin fixed and paraffin embedded human liver tissue followed by peroxidase conjugation of the secondary antibody and DAB staining. This data demonstrates the use of PLEKHA4 Antibody (N-term) for immunohistochemistry. Clinical relevance has not been evaluated.



Please note: All products are 'FOR RESEARCH USE ONLY. NOT FOR USE IN DIAGNOSTIC OR THERAPEUTIC PROCEDURES'.