

IAH1 Antibody (Center)

Affinity Purified Rabbit Polyclonal Antibody (Pab)

Catalog # AP11792c

Product Information

Application	WB, E
Primary Accession	Q2TAA2
Other Accession	NP_001034702.1
Reactivity	Mouse
Host	Rabbit
Clonality	Polyclonal
Isotype	Rabbit IgG
Clone Names	RB29070
Calculated MW	27599
Antigen Region	78-106

Additional Information

Gene ID	285148
Other Names	Isoamyl acetate-hydrolyzing esterase 1 homolog, 31--, IAH1
Target/Specificity	This IAH1 antibody is generated from rabbits immunized with a KLH conjugated synthetic peptide between 78-106 amino acids from the Central region of human IAH1.
Dilution	WB~~1:1000 E~~Use at an assay dependent concentration.
Format	Purified polyclonal antibody supplied in PBS with 0.09% (W/V) sodium azide. This antibody is purified through a protein A column, followed by peptide affinity purification.
Storage	Maintain refrigerated at 2-8°C for up to 2 weeks. For long term storage store at -20°C in small aliquots to prevent freeze-thaw cycles.
Precautions	IAH1 Antibody (Center) is for research use only and not for use in diagnostic or therapeutic procedures.

Protein Information

Name	IAH1
Function	Probable lipase.

Background

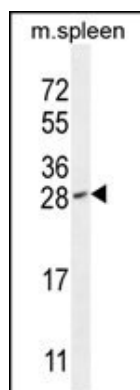
Probable lipase (By similarity).

References

Ota, T., et al. Nat. Genet. 36(1):40-45(2004)

Strausberg, R.L., et al. Proc. Natl. Acad. Sci. U.S.A. 99(26):16899-16903(2002)

Images



IAH1 Antibody (Center) (Cat. #AP11792c) western blot analysis in mouse spleen tissue lysates (35ug/lane). This demonstrates the IAH1 antibody detected the IAH1 protein (arrow).

Please note: All products are 'FOR RESEARCH USE ONLY. NOT FOR USE IN DIAGNOSTIC OR THERAPEUTIC PROCEDURES'.